

PLACE

Service Plan 2021-2025

Plan Year: 2021-2022

Tim Gregory
Director of Place
V.08

Contents

Council Ambition, Values, Outcomes and Priorities	3
Departmental Overview	4
Section One: Council Priorities	13
Section Two: Departmental Priorities	24
Appendix A – Approved Controllable Budget	26
Appendix B – Forward Plan of Procurement Projects	28
Appendix C – Vehicle Replacement Programme	33
Appendix D – Waste Management Service Capital Programme	35
Appendix E – Derelict Land Reclamation and Regeneration Capital Programme	36
Appendix F – Highways Capital Programme 2021-2022	37

Council Ambition

“We will work together with our partners and communities to be an enterprising council delivering value for money and enabling local people and places to thrive”

Values

The way we work – we will:

- Listen to, engage and involve local people ensuring we are responsive and take account of the things that matter most to them
- Be open minded, honest and accountable ensuring the decisions that we make are fair and transparent
- Spend money wisely making the best use of the resources that we have
- Work with partners and local communities because we know that we cannot tackle complex problems on our own
- Be aspirational about our vision for the future, for our organisation, local people and communities

Council Outcomes

We want Derbyshire to have:

- Resilient, thriving and green communities which share responsibility for improving their areas and supporting each other
- Happy, safe and healthy people, with solid networks of support, who feel in control of their personal circumstances and aspirations
- A strong, diverse and clean economy which makes the most of Derbyshire's rich assets and provides meaningful opportunities for local people to achieve their full potential
- Great places to live, work and visit with high performing schools, diverse cultural opportunities, transport connections that keep things moving and a healthy and sustainable environment for all
- High quality public services that work together and alongside communities to deliver services that meet people's needs

Council Priorities

Our Council priorities are:

- Resilient, healthy and safe communities
- High performing, value for money and resident focussed services
- Effective early help for individuals and communities
- A prosperous and green Derbyshire

Departmental Overview

Employing over 745 staff and with an annual revenue budget exceeding £78 million, the Department provides a wide range of services within the community which have a direct impact on the lives of Derbyshire people, as well as on those who visit or work within the County.

The department will make the transition from being known as Economy, Transport and Environment to being identified as Place during the early part of 2021. Place shaping, whether by direct intervention or through influencing and supporting partners is at the heart of what we do. Building fruitful relationships and working in partnership is critical to success, whether in support of local businesses, in providing a well maintained highway network and efficient transport system, managing the increasing threat of flood risk including preparing and adapting for resilience, in supporting sustainable mineral extraction planning decisions or in promoting the countryside that is rich and diverse both in its landscape and its wildlife and is a hugely attractive tourist destination.

Climate Change is a key Council priority, and the responsibility for the department will be to lead on the development of the overall strategy and action plan for the Authority to reduce carbon emissions. This will include developing internal initiatives as well as working closely with external partners and organisations to develop a natural capital strategy and influence and facilitate the actions needed to decarbonise and make the County more sustainable in the future.

As identified in the recent Your Council Your Voice 2020 consultation, the number one issue for many of our residents is the condition of roads and footways. We have a well-established and robust asset management approach and are currently implementing a Future Highways Model, which includes conducting a detailed review of processes and establishing and embedding partnerships with external providers.

Supporting the local economy of Derbyshire is a key aspect of the Department's work, particularly as we look to economic recovery post COVID. The authority has been instrumental in establishing and developing plans to support the local economy at this challenging time, working closely with its partners.

Delivering 'good growth' in the local economy of Derbyshire is an important consideration in all aspects of the Department's work, whether through providing a sustainable and efficient transport system – including public transport, a well maintained highway network, encouraging low carbon industries or supporting sustainable mineral extraction through planning decisions. The Department will always look to balance economic growth whilst protecting what makes Derbyshire special, such as its heritage and landscape, which themselves are major economic assets.

The Department will be instrumental in taking forward the economic development and regeneration agenda and will play a vital role in developing services and infrastructure that encourage and deliver against the Council Plan priority of **a prosperous and green Derbyshire**. The Department will ensure its resources are focussed on those areas that support and help to sustain growth and create jobs, delivered through a mix of local authority, Local enterprise Partnership (LEP) or private sector funding.

Strategic Leadership and Management

As the Department meets the challenges of reducing resources, changing national policies and new systems and technologies, effective workforce planning is essential to ensure that there are the right number of employees, with the right knowledge and skills, in the right place, at the right time. The Department will, therefore, need to ensure that its resources, whether financial, staffing or physical, are properly aligned to meet service priorities in the short and long term.

Leadership and direction will be provided to ensure effective management of staff and provision of support by the Departmental Management Team in order to assist in the Council's wider drive for effectiveness and efficiency and contribute to required savings targets, as necessary.

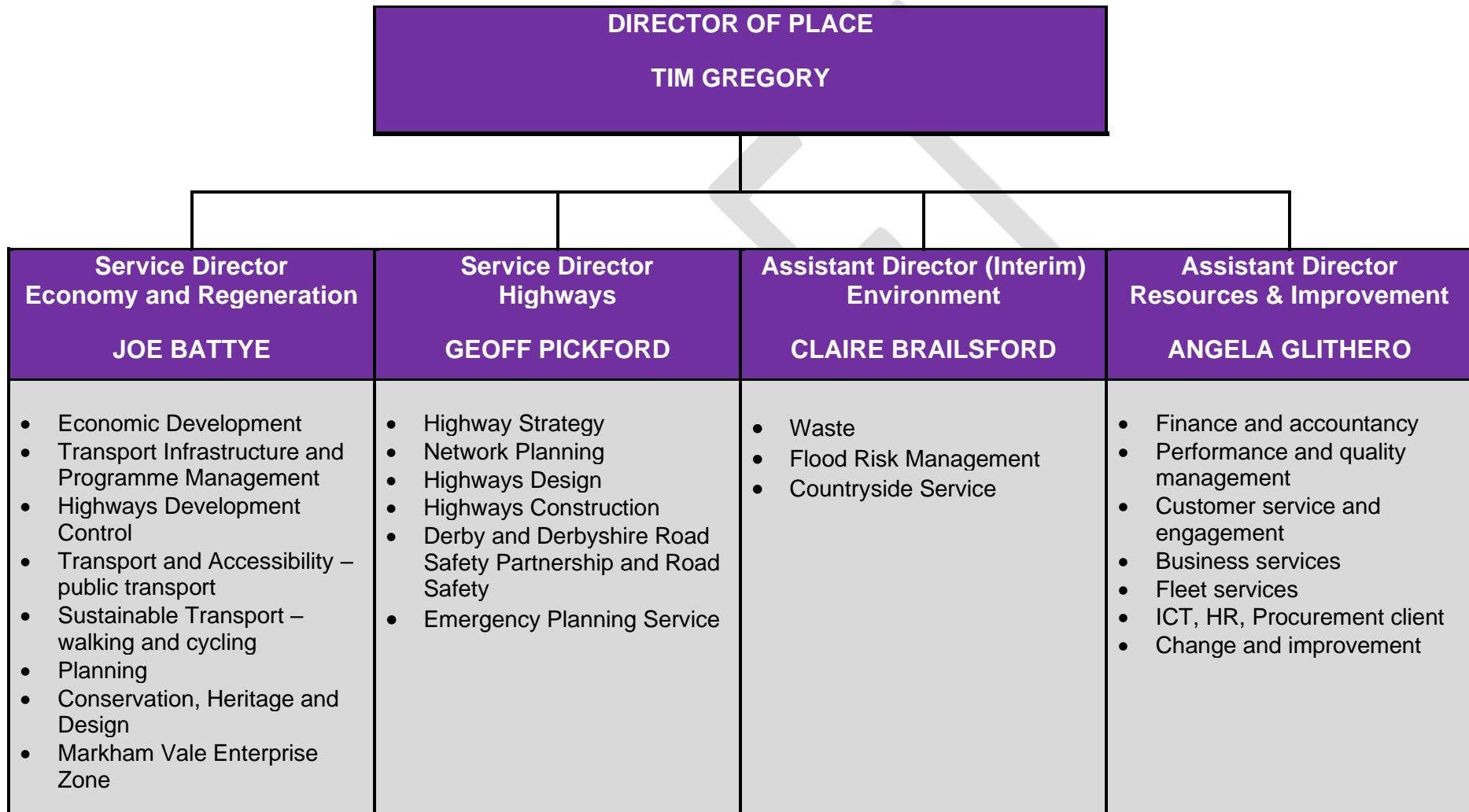
Workforce planning will ensure the Department is able to identify and effectively plan for issues and challenges, including any reducing areas of work, any new or growth areas, changes in Government and Council policies and the impact of other internal and external drivers. The workforce planning process will also enable the Department to address any skills and competency needs, for example, where there may be changes to jobs or services, skills shortages or new requirements/working practices and processes to meet our business needs, ensuring relevant and appropriate training and development is provided.

Details of the Department's approved controllable budget, forward plan of procurement, Vehicle Replacement Programme, Waste Management Capital Programme, Highways Capital Programme and Derelict Land Reclamation and Regeneration Capital Programme are contained in the Appendices to the Service Plan.

Delivery of the Department's services and operations will be guided by the principles of sustainability embedded in the revised Corporate Environment Policy, Strategy and Action Plan, in order to promote a better quality of life for our communities, encourage economic regeneration and protect and enhance the environment.

The Department will provide the leadership and framework to achieve its performance targets through its Quality Management Systems (QMS) and Environmental Management System (EMS), in accordance with the requirements of the International Standards Organisation ISO9001 and ISO1400 respectively.

Departmental Services – Current Structure



NB: At date of publication there is restructuring of the senior management arrangements in the department underway to strengthen senior management capacity at Director and Assistant Director level.

Budget savings

The Department will contribute to the Council's priority of providing **High performing, value for money and resident focused services** during 2021-22 and will deliver savings of **£1.783m** as follows:

Staffing	The number of staff will be reduced by not replacing some people when they leave, staff reorganisations and looking for other sources of income to pay for staff costs.		£1,458,000
	Economy & Regeneration	£330,000	
	Environment	£64,200	
	Highways	£636,500	
	Resources and Improvement	£427,300	
Highways Agency Agreements	The Council will reduce the cost of highway maintenance work carried out on its behalf by other organisations		£150,000
Parking Services	The Council will save money by managing its on street parking service differently.		£25,000
Digital Derbyshire	The team responsible for ensuring superfast broadband is available across the County will be funded from the Council's reserves instead of a revenue budget		£150,000

Key Departmental Risks

Priority	Key Risks	Mitigations
Resilient, healthy and safe communities	Failure to safeguard children and vulnerable adults using Economy, Transport and Environment services	DBS checks are undertaken on all relevant employees, drivers and passenger assistants. Any necessary health and safety checks for visits and activities comply with DCC requirements.
High performing, value for money and resident focussed services	Failure to deliver budget savings or income targets	The department has a robust five-year plan for delivery of budget savings with regular monitoring in place
	<p>Failure to achieve Value for Money (VfM) for the Council's New Waste Treatment Facility and failure to re-commission the facility and secure long-term operation</p> <p>The Council is working with stakeholders to determine the "Estimated Fair Value" of the facility following termination of the Project Agreement with RRS. <i>This is the compensation due to the former contractor and also comprises the value of the plant taking into account all of the costs of rectifying ongoing issues and the costs of providing the services to meet the agreed contract standards. Failure to achieve VfM is a significant risk to the Council's budget. Failure to re-commission the facility is a significant risk for the long-term waste management strategy, the Council's future economic and environmental sustainability and its reputation.</i></p>	<p>The Council is meeting regularly with the project funders in an effort to reach a consensual settlement on the EFV. In parallel preparations continue in the event negotiations are unsuccessful.</p> <p>Work to determine the condition and capability of the facility is nearing completion and will determine the next steps for the facility. This information is informing the EFV workstream.</p>

Priority	Key Risks	Mitigations
<p><i>Prosperous and green Derbyshire</i></p>	<p>Failure to maintain assets including roads, pavements, bridges, retaining walls, street lighting columns, safety fencing, gullies, countryside assets, canals, reservoirs</p> <p>Management of DCC water bodies - Serious injury to the public or employees and/or severe damage to land or infrastructure as a result of failure of an asset</p> <p>Ash dieback - Serious injury to the public or employees on Council owned land, Highway Network, Public Rights of Way (PRoW) Network, Countryside Sites and premises</p>	<p>A risk based approach to asset management is in place in accordance with the Code of Practice - "Well Managed Highway Infrastructure". Approach to managing network resilience being developed and implemented during 2020-21.</p> <p>The County Council owns and operates water bodies of varying types (canals, reservoirs, lakes) condition and ages. Many of these assets are managed by the Countryside Service. Management of the assets by Countryside Service Staff includes arranging inspections; maintenance works; vegetation management; waterbody structural checks; specialist flood studies; investigations to identify engineering solutions, including engagement of specialist consultants, and securing funding.</p> <p>The Countryside Service has initiated a programme to quantify the scale of the problem; plan an inspection regime for roadside trees; provide training to all site based staff and establish escalation procedures; undertake a desk-based assessment of the location of ash trees utilising detailed site knowledge; use latest research to assess individual trees and make management decisions; coordinate a corporate working group to oversee ash dieback management and progress the development of a Corporate Ash Dieback Action Plan with appropriate funding options.</p>

Achievements during 2020-21

A summary of the key achievements for the Department during **2020/21** are detailed below:

Economy and Regeneration

- Contributed to the organisation and delivery of food hampers on several occasions to foster families in Derbyshire and throughout the country for Derbyshire placed children (in partnership with Children's Services) and delivered meals to Residential and Care homes
- Provided several drivers to the Royal Derby Hospital to help the front-line NHS patient discharges
- Transported care staff during anti-social hours when they have been deployed to other homes and unable to access public transport
- Re-configured home to school networks to support the safe transportation of children of key workers and vulnerable children to school during the national lockdowns
- Delivered safe 'return to learn' in September for thousands of young people requiring transport – working within extremely challenging circumstances
- Rolled out walking and cycling projects to assist rural mobility
- Gained recognition in becoming a National Finalist in the Royal Town Planning Institute Planning Team of the Year 2020
- Transfer of Apprenticeship levy funding to Derbyshire Businesses to support 55 new apprentices
- Clowne Greenway - Reclaimed 5 miles of derelict railway and replace it with a significant section of the Derbyshire Key Cycle Network on the Clowne Greenway
- Installation of a further 20 dual fast Electrical Charge Points installed across two of our local council areas
- Provided immediate business support, advice and emergency funding to local businesses through:
 - Roll out of £1m hardship grant
 - Roll out of Government discretionary grants
 - 100+ webinars covering various topic areas, including access to funding and e-commerce
 - Established recovery governance and developed and approved a COVID Recovery Strategy to support local business and communities survive and revive from the impact of the pandemic
 - ShopAppy rolled out to all Derbyshire town centres to support e-commerce in retail and business
 - Submitted £40m market town renewal bid to LEP + wifi/ smart towns proposals
 - Developed and approved £1m business start-up grants
 - Developed £2m Green Entrepreneurs grant scheme
 - Launched Careers and developed youth hubs
 - Rolled out Kickstart
 - My Futures website developed
 - 3 task forces launched for tourism, the high street and transport
 - Virtual Christmas market launched
 - £500k gigabit voucher top up scheme
 - Developed rural mobility project
- Established the first COVID Response Hub at Markham Vale and receipt / distribution of welfare parcels

- Secured new investors and development at Markham Vale
- Delivered regeneration programme with over £20m of projects
- Completed the second Digital Derbyshire contract
- Supported HS2 and other planned development projects

Environment

- Managed the unprecedented demand for access to the countryside sites during the pandemic with bank holiday volume visitor numbers day after day from March through to September 2020. Dealt with many challenges including antisocial behaviour and large volumes of litter.
- Established a cross departmental working group to coordinate the work of the Council in tackling ash die back disease across the Council's tree stock.
- Commencement of the Lower Hartshay scheme to protect 10 properties from flooding, the scheme is programmed to be completed by 31 March 2021. Flood defence grant in aid funding was secured to enable the scheme to progress, which provides much needed flood mitigation to properties who have suffered flooding issues for several years.
- Secured funding for a Natural Flood Risk Management Officer at the Don Catchment Rivers Trust and delivered a number of Natural Flood Management schemes in North East Derbyshire in 2020/21. These schemes will assist in controlling surface water, through natural processes, thus reducing the flood risk to the surrounding area and properties and enhancing the natural environment.
- Responding to the 3rd major flood event (Storm Christophe) in the past 18 months, managing the significant flood risk, both before, during and after the event
- Successfully reopened the Council's nine household waste recycling centres following the first national lockdown and through careful management of the backlog of visits, the sites enabled over 100,000 people to visit each month and maintain safe social distancing practices to protect themselves and the staff.

Highways

- Reduced the street lighting energy consumption and carbon emissions from 17,250,000 kWh and 7,500 Tonnes of CO2 in 2019/20 to a forecasted 15,950,000 kWh and 7,100 Tonnes of CO2 in 2020/21, equating to a saving of £375,000
- Responded to adverse weather events including high winds, floods and more recently snow
- Delivered £18.3 million worth of capital schemes under COVID restrictions and new working practices
- Facilitated the safe re-opening of all Derbyshire town centres and countryside sites installing social distancing measures and active travel options walking and cycling

Resources and Improvement

- Created a low carbon pool fleet of eight electric cars and three e-bikes to reduce grey fleet travel
- Completed the County Transport Enterprising Council Review – resulted in a new structure and new approach to providing leadership across the council on vehicle provision – reducing costs and contributing to the climate change “net zero by 2032” carbon reduction targets
- Elvaston Castle Masterplan – “in principle” commitment from Cabinet to a major regeneration and investment programme
- Supported other services including assisting with the setting up of the initial food distribution hub for Public Health; supported the running of the PPE stores both for the Local Resilience Forum and the Council’s store; shared staff to support the re-opening of HWRC sites; helped with establishment of testing sites and assisted with the scheduling of staff to manage these sites
- Maintained all five County Transport workshops and admin open throughout the pandemic with no loss of service to core fleet services and that of Derbyshire police
- Provided a new Out of Hours Service for dealing with Highways related issues

Section One: Council Priorities

The Department will support all five of the Council Plan Outcomes through the delivery of services to the residents, businesses and visitors to Derbyshire, and will contribute principally to the following Council Plan Priorities:

Resilient, Healthy and safe communities

Actions	Lead	Start	Complete	Success Measures	Deliverable listed in the Council Plan
Provided support to people and communities in need, including financial help from our discretionary fund and support for those affected by flooding	Assistant Director Environment	April 2021	March 2022	<ul style="list-style-type: none"> The successful distribution of the Property Flood Resilience (PFR) Recovery Support Scheme grant funding for the November 2019 and February 2020 flood events 	✓

High Performing, value for money and resident focussed services

Actions	Lead	Start	Complete	Success Measures	Deliverable listed in the Council Plan
Increased the levels of customer satisfaction in the Council's Highway Services	Service Director Highways	April 2021	March 2022	<ul style="list-style-type: none"> Increase in customer satisfaction level in relation to Highways Services Introduce improved methods of obtaining customer feedback 	✓

Actions	Lead	Start	Complete	Success Measures	Deliverable listed in the Council Plan
Supported a resident-first approach through a range of mechanisms to improve access to online services and customer service performance	Assistant Director Resources and Improvement	January 2021	December 2021	<ul style="list-style-type: none"> • Introduce improved processes for dealing with customer enquiries efficiently and effectively • Completed the transition of the 'report a fault' form to the Customer Relations Management (CRM) Portal 	✓
Improved the response times to customer contacts ensuring the most effective communication channel are used	Assistant Director Resources and Improvement	February 2021	March 2022	<ul style="list-style-type: none"> • Reduced the average time to provide a response to a customer enquiry • Number of people accessing services using the CRM • Improve the customer experience 	
Delivered Phase 3 of Vision Derbyshire including activity on business support, climate change, homelessness, independent living and skills and employment priorities, creating new arrangements to speed up joint decision making with partners	Service Director Economy and Regeneration / Assistant Director Environment	April 2021	March 2022	<ul style="list-style-type: none"> • New shadow/joint governance arrangements developed and operational • Phase 3 implementation plan in delivered • Accelerated delivery plan identifying short, medium and long-term programme priorities developed 	✓
Worked with partners to secure additional funding into Derbyshire and progress a devolution deal for the East Midlands	Service Director Economy and Regeneration	April 2021	March 2022	<ul style="list-style-type: none"> • Effective local partnership arrangements in place to ensure streamlined governance and decision making to enable Derbyshire to speak with one voice 	✓

Actions	Lead	Start	Complete	Success Measures	Deliverable listed in the Council Plan
				<ul style="list-style-type: none"> Coordinated one council approach and response to the proposed Devolution and Local Recovery White Paper developed. 	
Identified and implemented a programme of strategic transformation as part of Phase 2 of the Enterprising Council Strategy	All Directors	April 2021	March 2022	<ul style="list-style-type: none"> Engage with and contribute to the Strategic Transformation Programme to deliver a one Council approach 	✓
Implemented the Wellbeing Action Plan to support employee wellbeing, reduce sickness absence and improve service delivery	All Directors	March 2019	April 2020	<ul style="list-style-type: none"> Reduced the average number of days lost to sickness absence and mental health issues 	✓
Kept on track to achieve all planned budget savings in the medium term	All Directors	March 2019	March 2022	<ul style="list-style-type: none"> Deliver £1.783m savings target by March 2022 	✓
Actively pursue a programme of income generation in relevant services.	All Directors	Ongoing	Ongoing	<ul style="list-style-type: none"> Increase income year on year 	

Key performance measures

Description	Actual	Actual	Latest	Target	Target
	2018-19	2019-20	2020-21	2020-21	2021-22
Achieved Departmental budget savings	£2.085m	£737,000	£858,000	£1.576m	£2.013m
Average number of days lost per appointment to sickness	11.02 days	7.6 days	6.07 days	9.3 days	7.5 days
New sickness absence measure TBC (Dept figure)*	New Measure	New Measure	New Measure	Not set	Baseline year
Spend on Agency Staff	£147,772	£57,329	£80,607	Monitor	TBC
Customer satisfaction with Highways and Transportation Services	55%	55%	54%	Monitor	57%
Number of compliments about Council services	209	124	151	Monitor	Monitor
Number of customer complaints	116	69	73	Monitor	Monitor

*New measure being developed to enable benchmarking against comparator organisations and to support robust reporting. Targets for the new measure, which will subsequently replace the existing measure, will be set once baselines established and new reporting mechanisms embedded.

A Prosperous and green Derbyshire

Actions	Lead	Start	Complete	Success Measures	Deliverable listed in the Council Plan
Delivered a £40m Local Transport Programme to provide well maintained roads and highways and address road safety concerns	Service Director Highways	April 2021	March 2022	<ul style="list-style-type: none"> Improvements to the condition of Highway assets Improved satisfaction with Highway Services 	✓

Actions	Lead	Start	Complete	Success Measures	Deliverable listed in the Council Plan
Deliver a phased implementation of the Future Highways Model, including the introduction of the new commissioning framework, developing improvement plans for priority service areas and identifying commercialisation opportunities	Service Director Highways	January 2019	March 2023	<ul style="list-style-type: none"> Improvements in the delivery of Highway related services 	
Maintain and manage the road network, including more than 5,500km of roads and pavements, 1,800 bridges and estimated 930km of roadside retaining walls, making best use of resources and aiming to reduce burden on revenue budgets	Service Director Highways	Ongoing	Ongoing	<ul style="list-style-type: none"> Highways infrastructure provides a safe and reliable network with defects repaired in a timely manner 	
Reduce the number of people killed or seriously injured on Derbyshire roads	Service Director Highways	Ongoing	Ongoing	<ul style="list-style-type: none"> Reduction in the number of people that have been killed or seriously injured on Derbyshire's Highway Network 	
Opened the Woodville-Swadlincote Regeneration Route, the Ashbourne Airfield Link Road and Hollis Lane Link Road Phase 1 in Chesterfield to improve road access	Service Director Economy and Regeneration	April 2021	March 2022	<ul style="list-style-type: none"> Delivered three transport infrastructure projects to unlock brownfield regeneration sites increasing homes and employment opportunities 	✓
Prepared a countywide response to the Integrated Rail Plan in relation to HS2, minimising any potential disruption and taking full advantage of the economic growth opportunities linked to the proposals	Service Director Economy and Regeneration	May 2017	September 2021	<ul style="list-style-type: none"> Developed and agreed mitigation plan or alternative plan for growth Confirmed the proposals for the reopening of the Barrow Hill / Ivanhoe Lines 	✓

Actions	Lead	Start	Complete	Success Measures	Deliverable listed in the Council Plan
Completed the viability assessment to progress the Chesterfield to Staveley Regeneration Route, which will create new homes and jobs for the area	Service Director Economy and Regeneration	September 2020	December 2021	<ul style="list-style-type: none"> Completed viability assessment Developed and agreed Transport Strategy for Northern Growth Zone 	✓
Developed and started to implement a Climate Change Strategy and Action Plan which sets out priorities to reduce the county's carbon emissions	Assistant Director Environment	April 2021	October 2021	<ul style="list-style-type: none"> Priorities and next steps identified in the Climate Change Strategy and Action Plan Departments are aware of the Climate Projections for Derbyshire and are using them in Service Planning Agreed a governance structure with partners to develop a county-wide approach to understanding the sources of emissions and reducing them 	✓
Explored initiatives to tackle climate change, including low carbon local energy generation schemes and working with partners to provide further publicly accessible electric vehicle charge points	Assistant Director Environment	April 2021	March 2022	<ul style="list-style-type: none"> Development of low carbon local energy generation schemes Increase in the number of accessible vehicle charge points 	✓

Actions	Lead	Start	Complete	Success Measures	Deliverable listed in the Council Plan
Reduced carbon emissions from Council property and vehicles, street lighting and procurement	Assistant Director Environment	April 2021	March 2022 and ongoing to deliverable deadline of 2032	<ul style="list-style-type: none"> • Reduction in greenhouse gas emissions from Council owned land and operations • Key projects to reduce emissions are being progressed • On track to meet target of net zero greenhouse gas emissions by 2032 • An energy policy has been developed and implemented to support the Council's carbon reduction pledges. • Reduction in staff mileage 	✓
Reduced the level of flood risk to the residents and businesses of Derbyshire through our planning role, the delivery of flood mitigation schemes and working with communities and partners to develop flood resilience measures	Assistant Director Environment	April 2021	March 2022	<ul style="list-style-type: none"> • Review of the Derbyshire Local Flood Risk Management Strategy • Consent responses completed • Increased customer satisfaction with flooding services responses 	✓
Drafted and agreed the Council's approach to Good Growth to maximise low carbon economic opportunities	Service Director Economy and Regeneration	April 2021	March 2022	<ul style="list-style-type: none"> • Implementation of Economic Recovery Strategy in line with agreed timescales • Approved the strategic Growth and Infrastructure Plan • Developed and approved delivery plan for exemplar transport project • LEVI strategy approved and implemented 	✓

Actions	Lead	Start	Complete	Success Measures	Deliverable listed in the Council Plan
Developed the Natural Capital Strategy, identifying areas where the natural environment can be enhanced in order to support healthy thriving communities a vibrant economy, and a healthy environment	Service Director Economy and Regeneration	April 2021	April 2022	<ul style="list-style-type: none"> • Strategy developed and approved in accordance with agreed timescales 	✓
Implemented year 1 of the Economic Covid-19 Recovery Strategy Action Plan rolling out a new £1m Business Start-up Programme to support business growth and a £2m Green Entrepreneurs Scheme to support innovation in low carbon technologies	Service Director Economy and Regeneration	April 2021	March 2022	<ul style="list-style-type: none"> • All planned rescue resume and revive actions completed within timescales • Business Start-up grant scheme and Green Entrepreneurs Scheme rolled out • Robust plans for regeneration and renewal developed and agreed for roll out March 2021 onwards 	✓
Implemented year 1 of the Covid-19 Employment and Skills Recovery Strategy Action Plan including delivery and expansion of a careers hub and development an implementation of a youth hubs		April 2021	March 2022	<ul style="list-style-type: none"> • All planned rescue resume and revive actions completed within timescales • Delivery of the careers and youth hubs • Robust plans for regeneration and renewal developed and agreed for roll out March 2021 onwards 	✓
Developed and secured funding to implement WIFI infrastructure in 27 town centres and better understand how town centres are being used, to help shape future economic renewal programmes	Service Director Economy and Regeneration	April 2021	March 2022	<ul style="list-style-type: none"> • Developing a programme of roll out of town centres with WiFi infrastructure 	✓

Actions	Lead	Start	Complete	Success Measures	Deliverable listed in the Council Plan
Attracted more businesses to relocate or expand to Derbyshire through the delivery of the “Invest in Derbyshire” plan	Service Director Economy and Regeneration	June 2018	September 2022	<ul style="list-style-type: none"> • Delivered an investment summit across the County 	✓
Implemented the gigabit top up voucher scheme and increased take-up of fibre enabled broadband across Derbyshire, particularly in rural areas, to improve access, speed and reliability for homes and businesses	Service Director Economy and Regeneration	April 2014	December 2021	<ul style="list-style-type: none"> • Completed and reconciled Contract 2 of Digital Derbyshire Programme • Implemented Voucher top up scheme 	✓
Worked with Derbyshire Businesses to support the creation of apprenticeships in key economic sectors, connecting people to local job opportunities	Service Director Economy and Regeneration	April 2021	March 2022	<ul style="list-style-type: none"> • Roll out of Levy Transfer to create additional apprenticeship opportunities • Provided direct support to SMEs to enable them to grow 	✓
Develop and delivered a strategic approach to Sustainable Travel across the County, promoting cycling and walking		April 2021	March 2022	<ul style="list-style-type: none"> • Responding to National Bus Strategy • Further roll out of the Key Cycle Network Priorities in line with funding • Develop a sustainable bus network • Delivery of the Local Cycling and Walking plan in line with planned timescales 	✓
Continue to refine and implement a comprehensive regeneration programme including Trent Valley, Derwent Valley, Rother Valley development and the Market Town Strategy	Service Director Economy and Regeneration		Ongoing	<ul style="list-style-type: none"> • Business opportunities for growth in Derbyshire are maximised 	

Actions	Lead	Start	Complete	Success Measures	Deliverable listed in the Council Plan
Develop and implement a programme to support the 'Shine a light on Derbyshire'	Service Director Economy and Regeneration	April 2019	September 2021	<ul style="list-style-type: none"> Festival programme implemented attracting more national and international visitors 	
Support regional partnership working to secure economic growth through national and international development, e.g. with D2N2 LEP, Midlands Engine, Midlands Connect and renewable energy with the Midlands Energy Hub	Service Director Economy and Regeneration		Ongoing	<ul style="list-style-type: none"> Funds secured from external infrastructure funding sources Overseas opportunities for trade and investment identified 	
Complete the reviews and finalisation of the Waste Local Plan and Minerals Local Plan	Service Director Economy and Regeneration	April 2017	December 2021	<ul style="list-style-type: none"> Local Plans adopted 	

Key performance measures

Description	Actual	Actual	Latest	Target	Target
	2018-19	2019-20	2020-21	2020-21	2021-22
• No. of businesses supported to export	n/a	51	0	20	5
• Number of start-up businesses supported	n/a	43	0	Monitor	50
• Number of enterprises receiving Information, Diagnostic and Brokerage (IDB)	12	2,028	56	Monitor	100
• Amount of external funding secured in last 12 months	£52.6m	£9,601,992	£15,386,826	£20,000,000	tbc
• No of jobs created at Markham Vale	2,236	2,102	N/A	3,400	2,500
• Percentage of total 200 acres development land occupied at Markham Vale	62.8%	77.9%	67.9%	82.0%	75%
• External funding secured Derwent Valley Mills	371,035	Not available	Not available	55,000	55,000
• Number of visitors to Derwent Valley Mill Sites	621,273	514,574	44,590	545,000	180,00

Description	Actual	Actual	Latest	Target	Target
	2018-19	2019-20	2020-21	2020-21	2021-22
• Secondary spend (economic impact) of World Heritage Site based on visitor numbers	£15,264,076	£12,642,565	£1,095,532	£13,390,105	£4,422,420
• Number of properties classed as hard to reach (post Contract 2) that are fibre enabled	N/A	N/A	N/A	N/A	500
• Percentage of road defects repaired within target	71.5%	77.2%	81.1	90%	90%
• Percentage of principal roads where maintenance should be considered (*revised methodology introduced 2019-20)	2%	13%*	17%	13%	13%
• Percentage of non-principal roads where maintenance should be considered (*revised methodology introduced 2019-20)	4%	23%*	17%	23%	23%
• Percentage of Unclassified road network where maintenance should be considered	N/A	N/A	27%	31%	tbc
• Number of people killed and seriously injured on Derbyshire's roads	330	326	Not available	Monitor	N/A
• Number of low carbon vehicle charging points	n/a	44	68	tbc	tbc
• Percentage of Strategy and Growth Panel active projects on track	92.3%	93.8%	85.7%	90%	90%
• Percentage infrastructure delivery active projects on track where DCC is promoter	85.7%	85.7%	85.7%	85%	85%
• Percentage reduction in greenhouse gas emissions from Council owned land and operations from 2010 baseline	47.9%	55.3%	tbc	55%	55%
• Percentage of flood enquiry responses provided within allocated timescales	78%	74%	53%	70%	70%
• Percentage of land drainage consents applications responded to within 8 weeks	88%	80%	100%	85%	85%
• Percentage of planning applications responded to by Flood Team within 21 days	87%	22%	38%	75%	75%

DRAFT

Section Two: Departmental Priorities

In addition to the Council Plan priorities, the following Departmental priority has been identified:

Maintaining a safe and sustainable environment

Actions	Lead	Start	Complete	Success Measures
<ul style="list-style-type: none"> Continue to work in partnership with Derby City Council on the multi-million pound, long term joint waste project to manage Derby and Derbyshire's Local Authority Collected Municipal Waste in a more sustainable way, reducing the amount of waste sent to landfill and the amount of CO2 generated 	Assistant Director Environment		Ongoing	<ul style="list-style-type: none"> Reduction in the amount of waste sent to landfill Increase in the amount of waste recycled and composted. Progressed recommissioning of Waste Treatment Centre at Sinfyn Increased customer satisfaction
<ul style="list-style-type: none"> Develop through our close partnerships with district and borough councils' solutions that minimise waste and increase recycling 	Assistant Director Environment		Ongoing	<ul style="list-style-type: none"> Increase in the amount of waste recycled and composted
<ul style="list-style-type: none"> Work with partners, including both Local Access Forums, towards an integrated, well managed and inclusive Rights of Way and access network, through the implementation of the Rights of Way Improvement Plan 	Service Directors Highways / Economy and Regeneration		Ongoing	<ul style="list-style-type: none"> Opportunities for joint working continue to be explored to develop and maintain more sustainable travel routes
<ul style="list-style-type: none"> Work with borough and district councils, utilities and property developers to champion eco-homes fit for the future and to help communities and businesses become less dependent on energy 	Service Director Economy and Regeneration		Ongoing	<ul style="list-style-type: none"> Increase in the number of eco-homes built Local Plans include policies that require the development of eco-homes
<ul style="list-style-type: none"> Seek Government support to ensure the level of investment and national planning regulations support the Council's ambition to reduce greenhouse gas emissions in Derbyshire 	Service Director Economy and Regeneration		Ongoing	<ul style="list-style-type: none"> Reduction in the CO2 emissions for Derbyshire
<ul style="list-style-type: none"> Support and promote the development of low carbon travel for employee business travel 	Assistant Director	April 2021	March 2022	<ul style="list-style-type: none"> Reduction in grey fleet miles and carbon emissions

Actions	Lead	Start	Complete	Success Measures
through the use of technology and electric vehicle fleet	Resources and Improvement			<ul style="list-style-type: none"> Low Carbon Pool Fleet available at multiple locations across the County
<ul style="list-style-type: none"> Introduce low carbon vehicles into the Council fleet – light vehicles and HGVs 	Assistant Director Resources and Improvement	April 2021	March 2022	<ul style="list-style-type: none"> Reduction in CO2 emissions from Council fleet vehicles
<ul style="list-style-type: none"> Introduce a managed Central Vehicle Supply (CVS) desk to enable a single cross departmental point of contact for short term vehicle requisition. Increase the use of the electric fleet, explore temporary re-deployment of fleet vehicles, manage and control the use of hired vehicles and reduce downtime for departments 	Assistant Director Resources and Improvement	April 2021	March 2022	<ul style="list-style-type: none"> Reduced annual spend on hire vehicles Reduction in CO2 emissions Decreased downtime for key departments leading to increased outputs
<ul style="list-style-type: none"> Deliver the Elvaston Masterplan delivery programme 	Assistant Director Resources and Improvement	January 2021	March 2022	<ul style="list-style-type: none"> Submission of planning applications Confirmation of funding sources Undertake further stakeholder engagement

Key performance measures

Description	Actual	Actual	Latest	Target	Target
	2018-19	2019-20	2020-21	2020-21	2021-22
Percentage of household waste sent for reuse, recycling and composting	48%	47.5%	47.0%	47.0%	47.0%
Percentage landfilled of total Municipal Waste collected	17%	20.0%	10.0%	15.0%	15.0%
Utilisation of low carbon fleet pool vehicles	N/A	N/A	tbc	tbc	tbc
Number of registered users of low carbon pool vehicles	N/A	N/A	tbc	tbc	tbc

Approved Controllable Budget

Service Area	Employee Related £'000	Premises Related £'000	Transport Related £'000	Supplies & Services £'000	Agency & Contracted Services £'000	Unallocated budgets £'000	Growth £'000	Controllable Recharges £'000	Gross Budget £'000	Income £'000	Net Budget £'000
Departmental Management Team	600	0	8	5	0	0	0	2	615	0	615
Economy & Regeneration:											
Planning Services	1,273	0	9	54	0	0	0	6	1,342	(245)	1,097
Economic Regeneration	605	179	19	592	38	(73)	2,000	40	3,400	(379)	3,021
Development Control	714	0	18	0	0	0	0	2	734	(1,338)	(604)
Employment and Skills	0	0	0	0	0	50	70	0	120	0	120
Strategic Transport	119	0	2	16	0	0	0	1	138	0	138
Derwent Valley Mills World Heritage Site	120	0	5	13	0	0	0	1	139	(27)	112
Conservation	486	1	9	13	0	(11)	0	(5)	493	(124)	369
Public Transport	945	13	43	256	20,366	(578)	250	(88)	21,207	(7,107)	14,100
Unallocated Savings	0	0	0	0	0	(518)	0	0	(518)	0	(518)
Environment:											
Waste Management	443	160	20	579	44,667	(230)	0	12	45,651	(2,326)	43,325
Countryside Services	2,099	237	55	316	141	(400)	550	427	3,425	(934)	2,491
Flood Risk Management	280	0	3	147	0	0	0	1	431	0	431
Highways:											
Highway Network Planning	4,785	820	632	4,548	5,689	(50)	700	2,044	19,168	(2,345)	16,823
Highway Construction	250	(154)	(1,202)	30	6	0	0	1,011	(59)	(2)	(61)

Service Area	Employee Related £'000	Premises Related £'000	Transport Related £'000	Supplies & Services £'000	Agency & Contracted Services £'000	Unallocated budgets £'000	Growth £'000	Controllable Recharges £'000	Gross Budget £'000	Income £'000	Net Budget £'000
Highways Strategy	368	(2)	(8)	73	5	0	0	35	471	(103)	368
Highway Design and Land Reclamation	(423)	0	33	87	0	0	0	11	(292)	(25)	(317)
Highway Road Safety	408	0	14	9	33	0	0	4	468	(377)	91
Emergency Planning	554	1	17	26	0	(57)	105	10	656	(268)	388
Resources and Improvement:											
Finance	433	0	1	5	0	0	0	1	440	0	440
Information Systems	71	0	0	0	0	0	0	0	71	0	71
Performance and Engagement	1,140	0	2	79	0	0	0	6	1,227	(580)	647
Other Business Support	1,755	24	7	215	7	(55)	0	(55)	1,898	(276)	1,622
Fleet Services	2,076	255	1,007	292	601	0	0	(3,730)	501	(1,448)	(947)
Unallocated Budget Savings	0	0	0	0	0	(5,467)	0	0	(5,467)	0	(5,467)
TOTAL	19,101	1,534	694	7,355	71,553	(7,389)	3,675	(264)	96,259	(17,904)	78,355

Forward Plan of Procurement Projects – up to 31 March 2023

In line with the Council's Financial Regulations, the forward plan of procurement projects for the department, set out below, details procurement projects above £50,000 which are planned to commence over the next 24-month period. The table shows the estimate procurement start date. The projects identified will be the subject of a procurement process as per the procedures set out in the Council's financial regulations.

Forward Plan of Procurements (above £50K less than the Find a Tender threshold of £189,330) due to commence prior to April 2023

Title	Value	Procurement Start	Key Decision
Internet Hosting and Public transport Route Map Production	£50,000.00	TBA	No
Non-invasive video data collection	£50,000.00	2021/2022	No
Pilot Adult Care projects for carers using e-bikes	£50,000.00	2022/23	No
Supply and Printing of Bus Stop and Associated Signage	£50,000.00	05/04/2023	No
Supply and Maintenance of Timemaster	£54,636.15	01/03/2021	No
Collision Analysis System (ACCSMAP)	£59,982.00	01/02/2022	No
Skegby Trail re-surfacing	£60,000.00	01/04/2021	No
Commissioning of a Community Engagement Strategy	£60,000.00	2021/22	No
Commissioning of a Climate Adaptation Plan to increase resilience to climate change	£60,000.00	2022/23	No
Supply of Vehicle Electrical Components and Consumables	£60,000.00	01/03/2021	No
Skegby Trail Batley Lane crossing improvements	£70,000.00	01/04/2021	No
Agnes Meadow bridge repair works	£70,000.00	01/04/2021	No
Supply of a Hosted Video Traffic Data Collection Processing and Reporting Solution, Mobile Equipment and Associated Services	£70,000.00	01/01/2022	No
Supply of temporary road signs	£70,000.00	28/08/2022	No
FP.51 Cromford (High Peak Junction) Footbridge Repainting	£75,000.00	01/06/2021	No
Markham Vale - Erin Road Cycleway	£75,000.00	01/06/2021	No
S10 Reservoir compliance work at Mapperley Reservoir	£80,000.00	01/12/2020	No
Traffic Regulation Order Management & Consultation System	£90,000.00	01/09/2021	No
Roadside Information and Infrastructure Maintenance	£100,000.00	01/04/2021	No
Festival of Derbyshire Commission	£100,000.00	01/09/2021	No

Title	Value	Procurement Start	Key Decision
Mapinfo	£100,000.00	01/04/2022	No
Commissioning of an Energy Strategy for Derbyshire	£100,000.00	2021/22	No
Novus-FX	£104,535.00	01/03/2021	No
Victoria Bridge Glossop Repairs (A624)	£120,000.00	01/06/2021	No
Commissioning of Natural Capital Strategy	£120,000.00	2021/22	No
Waste Education Theatre and Workshops. Part of the ECO Schools Programme - 3 year contract	£120,000.00	01/04/2022	No
Supply of Ice Cream	£140,000.00	01/01/2021	No
Geotechnical Works	£150,000.00	01/05/2020	No
Traffic Data software replacement	£150,000.00	01/04/2022	No
Loscoe Culvert - repair/replace following detailed survey	£150,000.00	Spring 2021	No
Provision of Vehicle Glass Replacement and Repair	£150,000.00	30/03/2023	No
Vehicle Parts	£150,000.00	01/12/2020	No
Supply and Fit of Vehicle Livery and Vinyls	£150,000.00	21/09/2022	No
The Supply of Workshop Consumables	£160,000.00	31/01/2023	No
Ticketing Analysis Software	£168,400.00	31/03/2022	No
Flare Replacement Programme - 5 flares closed landfill sites	£175,000.00	01/04/2022	No
Loscoe Gas Extraction system improvement works	£185,000.00	01/08/2021	No

Forward Plan of Procurements (above the Find a Tender threshold of £189,330) due to commence prior to April 2023

Markham Vale Plot 8 Access Infrastructure	£200,000.00	01/10/2021	No
Support the implementation of low-emission school transport - seed funding	£200,000.00	2022/23	No
Supply of Concrete Kerbs and Flags	£200,000.00	01/05/2021	No
Supply of Rapid Set Mortars	£210,000.00	01/05/2021	No
Supply of Tools & Ancillaries for Highways & County Transport	£220,000.00	01/11/2021	No
Chesterfield Canal - Renishaw	£230,000.00	01/09/2021	No
Purchase, installation and back office software for Pay and Display Machines	£250,000.00	01/01/2021	No
Ashbourne Bypass Preliminary design and Environmental Statement	£250,000.00	Mar-21	No
Town Deal and Future High Streets scheme design	£250,000.00	Mar-21	No
South Derby Growth Zone Detail Design	£250,000.00	01/04/2021	No

Title	Value	Procurement Start	Key Decision
Hogshaw/Fairfield Roundabout, Buxton - Golf club earthworks contract	£250,000.00	Mar-21	No
Local Transport Plan technical support	£250,000.00	01/04/2021	No
Highway Extents Digitisation	£250,000.00	2021/2022	No
HS2 Consultancy Support/Studies	£250,000-£300,000	01/08/2021	No
Elvaston Castle Capital Enabling Works including Updated Conservation Plan	£270,000.00	01/03/2021	No
Bolsover Footbridge - repair/replace following survey	£275,000.00	01/04/2021	No
Laboratory IT Software Solution	£275,000.00	01/06/2021	No
Supply of cables, cut-outs and sundries for Street Lighting works	£340,000.00	01/04/2021	No
Frame Yard Redevelopment as Secure Staff Compound (includes £10k design fees)	£350,000.00	01/02/2021	No
Glossop Household Recycling Centre - update of drainage and installation of impermeable surface	£350,000.00	01/04/2021	No
Supply of photo-electric control units for Street Lighting	£360,000.00	01/04/2021	No
Supply of Ford Vehicles Parts to OEM or Equivalent Specification	£385,000.00	31/07/2022	No
Vehicle Hire	£400,000.00	30/01/2021	No
Safety fencing maintenance and repair works	£400,000.00	01/05/2021	No
Autodesk Subscriptions (inc. AutoCAD)	£405,000.00	01/04/2021	No
Concessionary fares consultancy support	TBA	01/07/2021	No
Smart ticketing consultancy support	TBA	01/07/2021	No
Collection of Waste Electrical and Electronic Equipment (WEEE)	TBA	30/09/2024	No
Elvaston Castle Defective Structure Repairs	£500,000.00	Mar-21	Yes
A61 GC Technology Project – CCTV framework	£500,000.00	01/10/2021	Yes
Provision of PPE Safety Wear	£540,000.00	01/08/2021	Yes
Automatic Traffic Counting	£558,373.05	01/01/2019	Yes
C43017 Harrington Bridge Refurbishment	£700,000.00	01/07/2021	Yes
Provision of Vehicle Accident Specialist Body Repairs	£750,000.00	Mar-21	Yes
Provision of Vehicle Specialist Repairs	£750,000.00	Mar-21	Yes
Provision of Services for the Collection and Disposal of Landfill Leachate	£800,000.00	01/01/2021	Yes
Vehicle Parts	£900,000.00	01/12/2020	Yes
Drainage Surveys - to include Camera Survey, Root Cutting & Cleaning & Drain Lining	£1,000,000.00	31/12/2021	Yes
VMS/PGI Framework contract	£1,000,000.00	01/10/2021	Yes

Title	Value	Procurement Start	Key Decision
Supply of lamps for Street Lighting	£1,000,000.00	01/04/2021	Yes
Supply of Specialist Plant for Surface Dressing	£1,200,000.00	30/10/2022	Yes
Surface Dressing Specialist Plant Hire	£1,322,157.00	30/10/2022	Yes
Asset Management Solution for Environmental Services	£1,329,774.00	01/04/2021	Yes
Highways drainage cleansing	£1,400,000.00	01/08/2021	Yes
Derbyshire Connect Active Travel	£1,466,000.00	01/09/2021	Yes
Surfacing & ancillary works for Highways	£1,500,000.00	01/11/2021	Yes
Supply of coated roadstone materials	£2,000,000.00	30/06/2022	Yes
Vehicle Hire Self Drive	£2,000,000.00	01/02/2021	Yes
Supply of Chippings for Surface Dressing	£2,100,000.00	30/10/2022	Yes
Provision of Surface Dressing Binder	£2,400,000.00	30/10/2022	Yes
Supply of dry roadstone materials	£3,000,000.00	30/06/2022	Yes
Supply of ready mixed concrete	£3,000,000.00	01/01/2021	Yes
Micro Surfacing of Derbyshire Highways including Surface Dressing, Slurry Sealing and thin Coat Surfacing	£4,000,000.00	31/12/2021	Yes
Insitu – Recycling	£4,000,000.00	31/12/2021	Yes
A61 Growth Corridor - Chesterfield Station Masterplan Hollis Lane Link Road Construction	£4,500,000.00	01/04/2021	Yes
Road marking and studding works	£4,500,000.00	01/05/2021	Yes
Fuel Cards	£4,520,000.00	01/01/2021	Yes
A61 Growth Corridor - Avenue Southern Access and Link Road Construction	£4,600,000.00	01/04/2021	Yes
Buxton Fairfield Roundabout	£5,000,000.00	Mar-21	Yes
Installation and removal of Street Lighting	£5,000,000.00	01/04/2021	Yes
Civil Parking Enforcement Contract	£6,000,000.00	01/08/2021	Yes
Ashbourne Airfield - Construction & Utility Works	£6,500,000.00	Mar-21	Yes
Broadband Delivery Framework (BDUK)	£14,780,000.00	31/03/2023	Yes
Elvaston Master Plan Delivery Programme	£15,000,000.00	Mar-21	Yes
Vehicle Purchase	£15,000,000.00	01/10/2020	Yes
Food and Garden waste processing contract	£34,000,000.00	01/01/2023	Yes
Transport Services DPS (Local Bus, School Bus, SEND & Adult Care)	£100,000,000.00	01/12/2020	Yes
Professional services contract	£100,000,000.00	Mar-21	Yes

Title	Value	Procurement Start	Key Decision
Provision of HWRC's (10 years) and Transfer Stations (3 years) and the disposal of residual waste	£188,000,000.00	01/07/2022	Yes

Please note: *The above procurement plans includes the replacement of existing contracts and also an early indication of new projects which may require procurement activity to commence within 2021-23. All values are estimated and may change when projects are tendered*

DRAFT

Vehicle Replacement Programme 2021-2022

Quantity to Replace	Average Age Profile of Existing Vehicles (Years)	Replacement Vehicle Type	New Vehicle Optimum Life (Years)	Estimated Capital Cost per Vehicle (£)	Estimated Capital Cost x No. of Vehicles (£)	Estimated Charge per Year per Vehicle (£)	Estimated Annual Budget Cost = Charge x Number of Units (£)
1	13	4WD Light Vehicles	7	37,000	37,000	7,527	7,527
2	10	Accessible Vehicle / Minibus with passenger lift & wheelchair provision - Van based	6	30,000	60,000	7,156	14,312
5	12	Minibus up to 16 Passenger Seats	6	30,000	150,000	7,932	39,660
1	12	Car - MPV	6	30,000	30,000	6,482	6,482
4	12	Light Commercial Vehicles (LCV) > 3000kg DGW up to 3500kg DGW - Panel Van	6	34,000	136,000	5,352	21,408
4	6	Minibus up to 16 Passenger Seats	6	30,000	120,000	7,635	30,540
2	13	4WD Light Vehicles	7	37,000	74,000	7,467	14,934
11	10	Light Commercial Vehicle (LCV) up to 3000kg DGW	6	22,000	242,000	6,019	66,209
4	10	Light Commercial Vehicles (LCV) > 3000kg DGW up to 3500kg DGW - Panel Van	6	34,000	136,000	7,621	30,484
1	12	Heavy Goods Vehicle from 3500kg GVW to 7500kg GVW - 7.5T Crane/Tipper	10	78,000	78,000	15,716	15,716

Quantity to Replace	Average Age Profile of Existing Vehicles (Years)	Replacement Vehicle Type	New Vehicle Optimum Life (Years)	Estimated Capital Cost per Vehicle (£)	Estimated Capital Cost x No. of Vehicles (£)	Estimated Charge per Year per Vehicle (£)	Estimated Annual Budget Cost = Charge x Number of Units (£)
4	12	4WD Light Vehicles	7	37,000	148,000	7,527	30,108
11	12	Light Commercial Vehicle (LCV) up to 3000kg DGW	6	22,000	242,000	5,711	62,821
6	6	Light Commercial Vehicles (LCV) > 3000kg DGW up to 3500kg DGW	6	34,000	204,000	7,387	44,322
1	15	Light Commercial Vehicles (LCV) > 3000kg DGW up to 3500kg DGW - Welfare Van	10	40,000	40,000	4,675	4,675
12	12	Light Commercial Vehicles (LCV) > 3000kg DGW up to 3500kg DGW - Tipper	6	47,000	564,000	10,151	121,812
5	15	Heavy Goods Vehicles over 7500kg GVW - 12T Tipper	10	78,000	390,000	15,247	76,235
11	15	Heavy Goods Vehicles over 7500kg GVW - 18T Tipper	10	80,000	880,000	16,683	183,513
6	12	Heavy Goods Vehicles over 7500kg GVW - 18T Crane/Tipper	10	110,000	660,000	21,625	129,750
9	10	HGV 18t Gritter and Snow Plough	10	129,000	1,161,000	26,111	234,999
1	10	HGV 26t Gritter, Straight Blade and Vee Snow Ploughs	10	160,000	160,000	33,474	33,474
109				Total	5,512,000		1,168,981

Waste Management Service Capital Programme 2021-2022

Capital Scheme	Description	Estimated Total Cost of Project (£)
Closed Landfill Flare Replacement Programme	Deliver the second phase of the new flare replacement programme. The strategy will replace all flares over a 3-year programme	£165,000
Loscoe Closed Landfill Site Improvements	Upgrade some gas wells and replace the gas flare to ensure that this facility continues to manage landfill gas effectively at this site.	£185,000
Glossop Transfer Station	Upgrade the drainage system and an impermeable surface to manage surface water.	£350,000

Derelict Land Reclamation and Regeneration Capital Programme 2021-2022

Scheme Location	Description	Total Scheme Cost (£)	Works Estimate (£)	Design Fees (£)	Total (£)	Funded from Rec Cap 325K (£)	Funding
North Area							
Markham Vale		41,350,000					
	See MEGZ capital programme						Cap receipts & other grants
	Markham North Tip Alt. Access		35,000	0	35,000	35,000	Rec Capital
Chesterfield Canal	Embankment Strengthening	45,000	40,000	5,000	45,000	45,000	Rec Capital
Grassmoor Aftercare	Fencing to treatment lagoon Ph2	15,000	15,000	0	15,000	15,000	Rec Capital
Others							
Mineshaft Capping		26,549	20,549	6,000	26,549	25,000	HPBC and DDDC (1,549k) and Rec Capital (25k)
SUB TOTAL			125,549	11,000	121,549	120,000	
	Others / Private				376,549		Sustrans, Landfill or similar grants (365k), Sponsorship (10k)
	DCC Capital Receipt				1,148,000		Land sales
	TOTAL NET				1,524,549		

Highways Capital Programme 2021-2022

	Dft Allocation	2021/22	% of Bid
01 Highway Maintenance Programme			
01 Carriageways		£12,839,815	53.4%
02 Footways		£2,100,000	8.7%
03 Drainage and flood management		£3,251,785	13.5%
04 Bridges, structures, retaining walls and highway boundary structures		£2,407,000	10.0%
05 Traffic Signs, Lines and Signals		£1,281,250	5.3%
06 Street Lighting		£1,094,950	4.5%
07 Rights of way		£750,000	3.1%
08 Cycle routes		£183,750	0.8%
09 Other greenway maintenance		£157,500	0.7%
Highway Maintenance Programme Total	£23,699,000	£24,066,050	100.0%
02 Integrated Transport Programme			
01 Road, Freight and Parking Management		£270,000	8.2%
02 Key Cycle Network investment plan		£547,500	16.6%
03 Local cycling and walking investment plan		£101,500	3.1%
04 Sustainable Economic Connectivity		£1,317,750	39.9%
05 Casualty reduction initiatives		£818,200	24.8%
06 Preparation and Implementation of Major Highway Projects		£250,000	7.6%
07 Countryside Assets		£0	0.0%
Integrated Transport Programme Total	£3,672,000	£3,304,950	100.0%
Capital Highways Improvements and Maintenance Programme Total	£27,371,000	£27,371,000	
2021-22 Funding Package			
DfT Pothole Funding		10,533,000	
DfT Highway Maintenance Block funding (needs element)		10,533,000	
DfT Highway Maintenance Block funding (incentive element)		2,633,000	
DfT Integrated Transport Block funding		3,672,000	
Funding Package Total		£27,371,000	

Scheme Number	Parish	Location (list of streets or names of assets affected. Wider area schemes use a broad location)	Intervention description (linked to project/ programme objectives)	Electoral Division	2021-22 Whole Scheme Cost (Design & Construction)
	Various	SCRIM Remedials	Carriageway Surface Treatment/Carriageway Resurfacing	Various	£210,000
	Various	Various - Preparatory works to support future years surface dress programme	Proprietary works to support future years surface dressing programme	Various	£876,296
	Various	Various - Carriageway Patching	Carriageway Patching	Various	£750,000
	Various	Various - Severe weather recovery	Carriageway repairs	Various	£1,000,000
	Various	Various - Network resilience	Carriageway repairs	Various	£585,069
	Various	Various - High impact short network sections	Carriageway repairs	Various	£1,300,000
	Various	Various	Programme preparation and project management	Various	£160,000
				Various Carriageways	£4,881,365

Resilient Network

Scheme Number	Parish	Location (list of streets or names of assets affected. Wider area schemes use a broad location)	Intervention description (linked to project/ programme objectives)	Electoral Division	2021-22 Whole Scheme Cost (Design & Construction)
	Hathersage	A6187 Sheffield Road (The Beeches to County Boundary)	Surface Dressing	Bakewell	£140,513
	Buxton	A6 Bakewell Road (Morrisons Rbt to Cunning Dale)	Surface Dressing	Buxton North & East/ Buxton West	£94,987
	Monyash	A515 Ashbourne Road (Pilsbury Road to Bruntmoor Cottage)	Surface Dressing	Dovedale	£93,292

Scheme Number			Parish	Location (list of streets or names of assets affected. Wider area schemes use a broad location)	Intervention description (linked to project/ programme objectives)	Electoral Division	2021-22 Whole Scheme Cost (Design & Construction)
			Matlock	A615 Matlock Green (Knowlestone PI to Mornington Rise)	Surface Dressing	Matlock	£14,297
			Calver	A623 Un-named Section (Calver X-Roads to Trinkey Lane)	Surface Dressing	Derwent Valley	£23,701
			Brough	B6049 Stretfield Road (A6187 to Brough Cottage)	Surface Dressing	Chapel & Hope Valley	£22,557
			Old Tupton	A61 Derby Road (Roundabout to The Homestead)	Surface Dressing	Clay Cross North	£17,644
			Clay Cross	A61 Derby Road (The Homestead to The Six Halts)	Surface Dressing	Clay Cross North	£41,060
			Clay Cross	A61 Derby Road (McDonalds to Tesco petrol station)	Surface Dressing	Clay Cross North	£21,102
			Clay Cross	A61 High Street (Aldi to Thanet St)	Surface Dressing	Clay Cross North	£28,004
			Shirland	A61 Main Road (Town End to Speed Limit signs)	Surface Dressing	Wingerworth & Shirland	£45,166
			Shirland	A61 Chesterfield Road (southbound) (Duals splitter to Alfreton brook)	Surface Dressing	Wingerworth & Shirland	£12,453
			Shirland	A61 Chesterfield Road (northbound) (Duals splitter to Alfreton brook)	Surface Dressing	Wingerworth & Shirland	£13,195
			Alfreton	A61 Chesterfield Road (southbound) (Alfreton brook to duals splitter)	Surface Dressing	Alfreton & Somercotes	£21,864
			Alfreton	A61 Chesterfield Road (northbound) (Alfreton brook to duals splitter)	Surface Dressing	Alfreton & Somercotes	£22,328
			Alfreton	A61 Chesterfield Road (Duals to King Street)	Surface Dressing	Alfreton & Somercotes	£19,328

Scheme Number	Parish	Location (list of streets or names of assets affected. Wider area schemes use a broad location)	Intervention description (linked to project/ programme objectives)	Electoral Division	2021-22 Whole Scheme Cost (Design & Construction)
	Brimington	A619 Ringwood Road (High St to Bottom Lodge)	Surface Dressing	Brimington	£31,098
	Staveley	A619 Chesterfield Road (Bottom Lodge to Private Drive)	Surface Dressing	Staveley	£6,843
	Staveley	A619 Lowgates (Duke Street roundabout to Fan Rd)	Surface Dressing	Staveley North & Whittington	£16,517
	Mackworth	A52 Ashbourne Road (Brun Ln to Mackworth Duals)	Surface Dressing	Alport and Derwent	£61,590
	Ilkeston	A6096 Millership Way (KFC/Tesco rbt to railbridge)	Surface Dressing	Ilkeston East	£35,914
	Kirk Langley	A52 Ashbourne Road (New House Farm to Flagshaw Ln)	Surface Dressing	Alport and Derwent	£33,231
	Langley Mill	A608 New Derby Road (The Great Northern PH to duals splitter)	Surface Dressing	Greater Heanor	£12,866
	Langley Mill	A608 Derby Road (Asda rbt to The Great Northern PH)	Surface Dressing	Greater Heanor	£7,719
	Ripley	B6441 Hartshay Hill (30mph to B6374 Cromford Rd)	Surface Dressing	Ripley East and Codnor	£11,435
	Ripley	B6441 Nottingham Road (Grosvenor Rd to A610)	Surface Dressing	Ripley East & Codnor	£36,901
	Chesterfield	A619 Chatsworth Road eastbound (Brampton Furnishings to West Bars rbt)	Surface Dressing	Boythorpe & Brampton South	£30,237
	Dronfield	B6057 Chesterfield Road (Green Ln to no. 27)	Carriageway Resurfacing	Dronfield East	£71,056
	Chesterfield	A619 West Bars Roundabout (incl Wheatbridge Rd junction and Markham Road eastbnd junct)	Carriageway Resurfacing	Boythorpe & Brampton South/ Spire	£110,420
	Renishaw	A6135 Station Road (Spinkhill Ln to west of rail bridge)	Carriageway Resurfacing	Eckington & Killamarsh	£149,062

Scheme Number			Parish	Location (list of streets or names of assets affected. Wider area schemes use a broad location)	Intervention description (linked to project/ programme objectives)	Electoral Division	2021-22 Whole Scheme Cost (Design & Construction)
			Long Eaton	B6002 Wilsthorpe Road/Pennyfields Boulevard rbt	Carriageway Resurfacing	Sawley/ Petersham	£19,043
			New Mills	A6015 Albion Road (A6 Swan Signals to joint at Station)	Carriageway Resurfacing	New Mills	£71,056
			New Houghton	A617 Chesterfield Road (Pleasley rbt)	Carriageway Resurfacing	Shirebrook & Pleasley	£88,251
			Chapel-En-Le-Frith	A6 Chapel By-Pass Northbound (100m approach to Whaley Bridge rbt)	Carriageway Resurfacing	Whaley Bridge	£46,778
			Barlborough	A6135 West bound dual (A619 to Jn 30)	Carriageway Resurfacing	Barlborough & Clowne	£93,225
			Buckland Hollow	A610 Ripley Road (Approach to B6013 Pentrich from Ripley)	Carriageway Resurfacing	Ripley West & Heage	£37,173
			Yeldersley	A52 Derby Road (100m approach either side Lady Hole Lane)	Carriageway Resurfacing	Ashbourne	£63,950
			Chesterfield	A617 Southbound dual (Lordsmill rbt to Horns Bridge rbt)	Carriageway Resurfacing	Spire	£77,380
			Barlborough	A6135/M1 Junction 30 roundabout circulatory	Carriageway Resurfacing	Barlborough & Clowne	£170,250
			Alfreton	A61 Derby Road (A615 Eachwell Ln to Oakerthorpe Brook)	Carriageway Resurfacing	Alfreton & Somercotes	£31,975
			Buxton	A53 Station Road /A515 roundabout	Carriageway Resurfacing	Buxton West	£24,162
			Baslow	A623 Calver Road aka Shay Bend	Carriageway Resurfacing/ High Friction Surfacing	Derwent Valley	£116,944
			Bakewell	A6 Haddon Road/Agricultural Way (HRA joint o/s allotments to Intake Ln)	Carriageway Resurfacing	Bakewell	£57,555
			Tupton	A61 Derby Road/Queen Victoria Road rbt	Carriageway Resurfacing	Wingerworth & Shirland/ Clay Cross North	£32,615

Scheme Number			Parish	Location (list of streets or names of assets affected. Wider area schemes use a broad location)	Intervention description (linked to project/ programme objectives)	Electoral Division	2021-22 Whole Scheme Cost (Design & Construction)
			Mastin Moor	A619 Worksop Road (Norbriggs Rd to Lansbury Ave)	Carriageway Resurfacing	Staveley	£23,981
			Ripley	A610 Nottingham Road (B6441 rbt to no. 168)	Carriageway Resurfacing	Ripley East and Codnor	£31,975
			Barlborough	A619 De Rodes Arms roundabout	Carriageway Resurfacing	Barlborough & Clowne	£38,659
			Ilkeston	A6096 Little Hallam Hill/Lower Stanton Road (Quarry Hill Rd to no.67)	Carriageway Resurfacing	Ilkeston West/ Ilkeston South	£48,324
			Heath	A617 Hasland Bypass east bound (100m approach to Jn29)	Carriageway Resurfacing	Sutton	£37,173
			Shipley	A6007 Heanor Road/Shipley Common Lane junction (no.228 to no.192)	Carriageway Resurfacing	Ilkeston West/ Ilkeston East	£47,963
			Chesterfield	A61 Chesterfield IRR nthbnd (100m approach to Tesco rbt)	Carriageway Resurfacing	St Mary's	£28,875
			Matlock	A632 Chesterfield Road (Quarry Ln to 100m northeast)	Carriageway Resurfacing	Matlock	£5,198
			Ilkeston	A6096 Ladywood Road (both directions 60m approaches to St Norberts Dr eastern junct)	Carriageway Resurfacing	Ilkeston West/ Ilkeston South	£38,370
			Ripley	A610/Wyatts Way rbt	Carriageway Resurfacing	Ripley East and Codnor	£31,336
			Swadlincote	A514 Civic Way (Midland Rd to Church St)	Carriageway Resurfacing	Swadlincote Central/ Swadlincote South	£113,831
			Brimington	A619 Chesterfield Road (Brackendale Close to Hall Road)	Carriageway Resurfacing	Brimington	£143,888
						Resilient Network Carriageways	£2,766,306

Non-Resilient Network

Scheme Number	Parish	Location (list of streets or names of assets affected. Wider area schemes use a broad location)	Intervention description (linked to project/ programme objectives)	Electoral Division	2021-22 Whole Scheme Cost (Design & Construction)
	Buxton	A537 Cat and Fiddle (A54 Jtn to County Boundary)	Surface Dressing	Buxton West	£49,002
	Buxton	A54 Macclesfield Main Road (River Wye to A54/A537 Jtn)	Surface Dressing	Buxton West	£60,000
	Calver	A625 Froggatt Edge (Riddings Lane to Moorlands Lane)	Surface Dressing	Derwent Valley	£40,431
	Snelston/Norbury	B5033 Cockshead Lane/Green Lane/Norbury Hollow/Dove Street	Surface Dressing	Ashbourne	£209,113
	Ashford in the Water	B6465 Ashford Lane (Longstone Lane to Little Longstone Road)	Surface Dressing	Bakewell	£65,483
	Thorpe	C62 Narlow Lane	Surface Dressing	Dovedale	£39,010
	Thorpe	C62 Washbrook Lane	Surface Dressing	Dovedale	£23,071
	Bradbourne	C147 Brassington Lane	Surface Dressing	Wirksworth	£71,535
	Buxton	U10318 Temple Road (College Rd to Green Ln)	Surface Dressing	Buxton West	£14,438
	Buxton	U10327 Spencer Road (College Rd to Green Ln)	Surface Dressing	Buxton West	£14,438
	Buxton	U10291 Burlow Avenue	Surface Dressing	Buxton North & East	£4,574
	Buxton	U10292 Harris Road	Surface Dressing	Buxton North & East	£7,484
	Buxton	U10293 Elysee Gardens	Surface Dressing	Buxton North & East	£4,955
	Buxton	U10294 Tedder Avenue	Surface Dressing	Buxton North & East	£4,193
	Buxton	U10295 Trenchard Avenue	Surface Dressing	Buxton North & East	£13,964
	Buxton	U10296 Nettleton Lane	Surface Dressing	Buxton North & East	£3,846
	Buxton	U10297 Kirkstone Road	Surface Dressing	Buxton North & East	£5,544
	Buxton	U10298 College Way	Surface Dressing	Buxton North & East	£1,733

Scheme Number	Parish	Location (list of streets or names of assets affected. Wider area schemes use a broad location)	Intervention description (linked to project/ programme objectives)	Electoral Division	2021-22 Whole Scheme Cost (Design & Construction)
	Combs	U10436 The Avenue	Surface Dressing	Whaley Bridge	£2,368
	Combs	U10437 Bellot Lane	Surface Dressing	Whaley Bridge	£2,916
	Stoney Middleton	U1129 Meadow Close	Surface Dressing	Derwent Valley	£7,046
	Stoney Middleton	U1138 Denham Crescent	Surface Dressing	Derwent Valley	£3,003
	Stoney Middleton	U1139 High Street (A623 to Middleton Lane)	Surface Dressing	Derwent Valley	£12,509
	Stoney Middleton	U1140 Middleton Lane (High Street to Highfields Farm)	Surface Dressing	Derwent Valley	£22,037
	Chinley	U10491 Charley Lane (A6 Bridgeholm Green to Whitehough Head Lane)	Surface Dressing	Whaley Bridge	£21,310
	Chinley	U10560 Princes Road	Surface Dressing	Whaley Bridge	£6,653
	Chinley	U10562 Belgrade Avenue	Surface Dressing	Whaley Bridge	£11,954
	Chinley	U10566 Ash Grove	Surface Dressing	Whaley Bridge	£13,825
	Chinley	U10567 Alders Avenue (incl cul-de-sac)	Surface Dressing	Whaley Bridge	£10,742
	Chinley	U10569 Pike View Close	Surface Dressing	Whaley Bridge	£3,188
	Chinley	U10570 Stockton Drive	Surface Dressing	Whaley Bridge	£4,401
	Chinley	U10572 Hartington Drive	Surface Dressing	Whaley Bridge	£1,940
	Chinley	U10573 Hawthorn Close	Surface Dressing	Whaley Bridge	£2,911
	Chinley	U10574 Hunters Green Close	Surface Dressing	Whaley Bridge	£2,841
	Matlock	U0061 Littlemoor Lane	Surface Dressing	Matlock	£49,088
	Two Dales	U0211 Wheatley Road	Surface Dressing	Derwent Valley	£8,691
	Hathersage	U1336 Church Bank	Surface Dressing	Bakewell	£5,798
	Hathersage	U1328 Moorland Road	Surface Dressing	Bakewell	£9,384

Scheme Number	Parish	Location (list of streets or names of assets affected. Wider area schemes use a broad location)	Intervention description (linked to project/ programme objectives)	Electoral Division	2021-22 Whole Scheme Cost (Design & Construction)
	Hathersage	U1324 Mill Lane	Surface Dressing	Bakewell	£5,532
	Hathersage	U1323 Dore Lane	Surface Dressing	Bakewell	£5,862
	Alfreton	B600 Nottingham Road (Prospect St to Abbott Rd (A38 slip))	Surface Dressing	Alfreton & Somercotes	£22,586
	Staveley	B6053 Eckington Road (Hall Lane to railbridge omit from A6192 road bridge to Farndale Rd)	Surface Dressing	Staveley North & Whittington	£64,455
	Sheepbridge	B6057 Sheffield Road (Sheffield Rd junction to boat yard)	Surface Dressing	Staveley North & Whittington	£28,702
	Clowne	B6418 High Street (John St to B6417 High St)	Surface Dressing	Barlborough & Clowne	£11,273
	Clowne	B6417 Mill Green Way (Tesco rbt to North Rd rbt)	Surface Dressing	Barlborough & Clowne	£5,405
	Brimington	B6050 Devonshire Street (A619 to Foljambe Rd)	Surface Dressing	Brimington	£7,235
	Chesterfield	B6057 Sheffield Rd (Donkey Derby PH to Duke St)	Surface Dressing	St Mary's	£44,040
	Palterton	C106 Ramcroft / Rylah Hill (Jn 29 to Main Street)	Surface Dressing	Bolsover South	£63,785
	Dronfield	C297 Gosforth Drive	Surface Dressing	Dronfield West & Walton	£51,784
	Pinxton	U12016 Alexander Terrace	Surface Dressing	Sth Normanton & Pinxton	£13,369
	South Normanton	U12135 Eastfield Drive	Surface Dressing	Sth Normanton & Pinxton	£16,187
	South Normanton	U12133 Corn Close	Surface Dressing	Sth Normanton & Pinxton	£15,402

Scheme Number			Parish	Location (list of streets or names of assets affected. Wider area schemes use a broad location)	Intervention description (linked to project/ programme objectives)	Electoral Division	2021-22 Whole Scheme Cost (Design & Construction)
			South Normanton	U12059 The Sycamores	Surface Dressing	Sth Normanton & Pinxton	£10,470
			South Normanton	U12060 Chestnut Drive	Surface Dressing	Sth Normanton & Pinxton	£2,697
			South Normanton	U12129 Leamington Drive	Surface Dressing	Sth Normanton & Pinxton	£9,350
			South Normanton	U12132 Highfield Drive	Surface Dressing	Sth Normanton & Pinxton	£5,411
			South Normanton	U12130 Beech Grove	Surface Dressing	Sth Normanton & Pinxton	£3,638
			South Normanton	U12131 Hazel Grove	Surface Dressing	Sth Normanton & Pinxton	£7,681
			South Normanton	U12142 High View Road	Surface Dressing	Tibshelf	£41,760
			South Normanton	U12141 Normanton Brook Road	Surface Dressing	Tibshelf	£3,479
			New Whittington	U2053 Brearley Avenue	Surface Dressing	Staveley North & Whittington	£19,520
			Bolsover	U12792 Oxcroft Lane (Mill Ln to B6417 Mansfield Rd)	Surface Dressing	Bolsover South	£100,144
			Bolsover	U12845 Elmton Lane (from Welbeck Rd for 110 metres)	Surface Dressing	Bolsover South	£3,292
			Shirebrook	U9827 Portland Drive (Portland Rd to Sports Direct rbt)	Surface Dressing	Shirebrook & Pleasley	£17,591
			Elmton	U12539 Frithwood Lane	Surface Dressing	Bolsover North	£41,309
			Birdholme	U2640 Grangewood Road	Surface Dressing	Birdholme	£18,982
			Grangewood	U2685 Harehill Road (Birchwood Cres to bus turning area)	Surface Dressing	Birdholme	£43,699

Scheme Number	Parish	Location (list of streets or names of assets affected. Wider area schemes use a broad location)	Intervention description (linked to project/ programme objectives)	Electoral Division	2021-22 Whole Scheme Cost (Design & Construction)
	Newbold	U3298 Highfield Lane	Surface Dressing	St Mary's	£46,674
	Chesterfield	U2951 New Beetwell Street	Surface Dressing	Spire	£21,559
	Chesterfield	U2958 Beetwell Street (New Beetwell St to Hipper St)	Surface Dressing	Spire	£7,755
	Clowne	U12764 Rectory Road	Surface Dressing	Barlborough & Clowne	£11,683
	Clowne	U12746 Portland Street	Surface Dressing	Barlborough & Clowne	£14,801
	Clowne	U12739 Neal Street	Surface Dressing	Barlborough & Clowne	£9,107
	Clowne	U12737 Brook Lane (Neal St to A616 Creswell Rd)	Surface Dressing	Barlborough & Clowne	£2,501
	Clowne	U12719 Wilson Avenue	Surface Dressing	Barlborough & Clowne	£10,672
	Clowne	U12720 Jago Avenue	Surface Dressing	Barlborough & Clowne	£6,866
	Clowne	U12721 Rose Avenue	Surface Dressing	Barlborough & Clowne	£4,320
	Clowne	U12722 Clune Street	Surface Dressing	Barlborough & Clowne	£9,021
	Steetley	U9828 Dumb Hall Lane (County Boundary to County Boundary)	Surface Dressing	Bolsover North	£8,351
	Whitwell	U12656 Scratta Lane (Steetley Lane to County Boundary)	Surface Dressing	Bolsover North	£4,481
	Morton	U14480 Holland Close	Surface Dressing	Clay Cross South	£5,948
	Pilsley	U14461 Grange Road	Surface Dressing	Clay Cross South	£9,771
	Pilsley	U14472 Willow Close	Surface Dressing	Clay Cross South	£2,235
	Pilsley	U14470 Queen Street	Surface Dressing	Clay Cross South	£7,929
	Pilsley	U14464 Pear Tree Road	Surface Dressing	Clay Cross South	£7,092
	Pilsley	U14463 Broom Avenue	Surface Dressing	Clay Cross South	£10,077
	Pilsley	U14462 Lonsdale Road	Surface Dressing	Clay Cross South	£3,113
	Pilsley	U14467 Damon Close	Surface Dressing	Clay Cross South	£3,656
	Pinxton	U12002 Plymouth Avenue (to limits of adoption)	Surface Dressing	Sth Normanton & Pinxton	£18,307

Scheme Number			Parish	Location (list of streets or names of assets affected. Wider area schemes use a broad location)	Intervention description (linked to project/ programme objectives)	Electoral Division	2021-22 Whole Scheme Cost (Design & Construction)
			Chesterfield	U2477 Crow Lane (Piccadilly Rd to Green Ln)	Surface Dressing	Spire	£19,531
			Staveley	U2277 Fan Road (A619 to Cemetery Ln excl rbt)	Surface Dressing	Staveley North & Whittington	£35,534
			Staveley	U2278 Erin Road (Cemetery Ln to Staveley Rd)	Surface Dressing	Staveley	£20,594
			Staveley	U2316 Telford Crescent	Surface Dressing	Staveley North & Whittington	£6,064
			Staveley	U2230 Franklyn Drive	Surface Dressing	Staveley North & Whittington	£9,315
			Staveley	U2232 Hartington View	Surface Dressing	Staveley North & Whittington	£3,875
			Staveley	U2231 Hillcrest Grove	Surface Dressing	Staveley North & Whittington	£3,401
			Staveley	U2348 Ringwood Avenue	Surface Dressing	Staveley	£3,783
			Staveley	U2349 Rowsley Crescent	Surface Dressing	Staveley	£3,309
			Staveley	U2353 Dale Close	Surface Dressing	Staveley	£6,254
			Staveley	U2350 Cromford Drive	Surface Dressing	Staveley	£7,005
			Staveley	U2352 Litton Close	Surface Dressing	Staveley	£2,437
			Staveley	U2351 Tideswell Close	Surface Dressing	Staveley	£2,246
			Stretton	U14498 Mickley Lane	Surface Dressing	Wingerworth & Shirland	£27,148
			Belper	A609 Nottingham Road (Short Street to St John's Road)	Surface Dressing	Belper	£45,166
			Harstshorne	A514 Ticknall Road (SMA bed vic. Hartshorne Wood)	Surface Dressing	Melbourne	£19,161
			Shottle	A517 Ashbourne Road (Shottlegate Fm to no.27)	Surface Dressing	Alport and Derwent	£19,161
			Belper	A517 Bridge Foot (Belper Lane to A6)	Surface Dressing	Alport and Derwent	£17,793

Scheme Number	Parish	Location (list of streets or names of assets affected. Wider area schemes use a broad location)	Intervention description (linked to project/ programme objectives)	Electoral Division	2021-22 Whole Scheme Cost (Design & Construction)
	Belper	A609 Lander Lane	Surface Dressing	Belper	£6,515
	Riddings	B6016 Greenhill Lane, South St, High St (Swanwick Rd - Bullock Ln)	Surface Dressing	Alfreton and Somercotes	£87,914
	Swadlincote	B5353 Newhall Road (B586 Midway Rd to Springfield Rd rbt)	Surface Dressing	Swadlincote Central	£19,979
	Swadlincote	B5353 High Street (Wellwood Rd to Chapel St)	Surface Dressing	Swadlincote North	£15,253
	Ripley	B6179 Butterley Hill (Argyll Rd to Pentrich Rd)	Surface Dressing	Ripley East and Codnor	£9,986
	Derby	B6179 Alfreton Road (Duffield Rd to 30mph)	Surface Dressing	Breadsall and West Hallam	£9,051
	Swanwick	B6016 The Green (B6179 to High Street)	Surface Dressing	Alfreton and Somercotes	£6,819
	Horsley	C69 Smalley Mill Road (Wood Ln to Church St)	Surface Dressing	Horsley	£63,993
	Breadsall	C162 Moor Road (Breadsall sign to Morley Alms Houses)	Surface Dressing	Breadsall and West Hallam	£62,595
	Belper	C5 Dalley Lane	Surface Dressing	Alport and Derwent	£54,470
	Mackworth	C2 Brun Lane	Surface Dressing	Alport and Derwent	£50,889
	Quarndon	C234 The Common (Burley Ln to Inn Ln)	Surface Dressing	Melbourne	£48,296
	Belper	C234 Gunhills Lane	Surface Dressing	Alport and Derwent	£46,518
	Long Eaton	C359 Fields Farm Road (B6540 to Forbes Cl)	Surface Dressing	Long Eaton	£40,650
	Long Eaton	C164 Rushy Lane (30mph to Stanton Rd)	Surface Dressing	Sandiacre	£34,610
	Derby	C161 Portway (Alfreton Rd to Nether Ln)	Surface Dressing	Horsley	£27,102

Scheme Number			Parish	Location (list of streets or names of assets affected. Wider area schemes use a broad location)	Intervention description (linked to project/ programme objectives)	Electoral Division	2021-22 Whole Scheme Cost (Design & Construction)
			Stanley	C16 Station Road (Morley Lane 30mph at allotments)	Surface Dressing	Breadsall and West Hallam	£26,963
			Belper	C152 Whitewells Lane (Wyver View to Dairywood Farm)	Surface Dressing	Alport and Derwent	£26,623
			Belper	C73 Hazelwood Hill	Surface Dressing	Alport and Derwent	£24,902
			Belper	C4 Red Lane	Surface Dressing	Duffield and Belper South/ Horsley	£23,481
			Kirk Hallam	U6752 Godfrey Drive (A6096 to A6096)	Surface Dressing	Ilkeston West	£51,201
			Kirk Hallam	U6767 Oliver Road (Godfrey Drive to Godfrey Drive)	Surface Dressing	Ilkeston West	£28,078
			Kirk Hallam	U6771 Wyndale Drive (Abbot Rd to Godfrey Drive)	Surface Dressing	Ilkeston West/ Breadsall & West Hallam	£18,431
			Kirk Hallam	U6772 Sunningdale Drive (Wyndale Drive to Wyndale Drive)	Surface Dressing	Breadsall & West Hallam	£17,267
			Kirk Hallam	U6773 Crosshill Drive	Surface Dressing	Breadsall & West Hallam	£2,252
			Kirk Hallam	U6774 Ridgeway Drive	Surface Dressing	Breadsall & West Hallam	£4,767
			Kirk Hallam	U6775 Highfield Drive	Surface Dressing	Breadsall & West Hallam	£2,553
			Kirk Hallam	U6776 Bankfield Drive	Surface Dressing	Breadsall & West Hallam	£2,065
			Kirk Hallam	U6779 Sharp Close	Surface Dressing	Breadsall & West Hallam	£1,614
			Kirk Hallam	U6780 Friars Court	Surface Dressing	Ilkeston West	£2,177
			Stanley	U7213 Morley Lane (Derby Rd/Station Rd to start of path)	Surface Dressing	Breadsall & West Hallam	£31,306
			Stanley	U7214 Common Lane (Morley Ln to A609 Belper Rd, Stanley Common)	Surface Dressing	Breadsall & West Hallam	£67,793
			Stanley	U7211 Glebe Crescent	Surface Dressing	Breadsall & West Hallam	£9,084

Scheme Number			Parish	Location (list of streets or names of assets affected. Wider area schemes use a broad location)	Intervention description (linked to project/ programme objectives)	Electoral Division	2021-22 Whole Scheme Cost (Design & Construction)
			West Hallam	U7160 Scargill Road (Hallam Way to St Wilfrid's Road incl cul-de-sac adl No.59 to 63)	Surface Dressing	Breadsall & West Hallam	£17,943
			Heanor	U8251 Roper Avenue	Surface Dressing	Greater Heanor	£34,985
			Heanor	U8252 Buxton Avenue (Roper Ave to Sunningdale Ave incl service road to Avis Ave)	Surface Dressing	Greater Heanor	£21,884
			Heanor	U8254 Avis Avenue	Surface Dressing	Greater Heanor	£7,695
			Heanor	U8255 Owers Avenue	Surface Dressing	Greater Heanor	£3,303
			Heanor	U8257 Frederic Avenue	Surface Dressing	Greater Heanor	£3,491
			Heanor	U8258 Corfield Avenue	Surface Dressing	Greater Heanor	£3,228
			Heanor	U8253 Coppice Drive	Surface Dressing	Greater Heanor	£10,023
			Heanor	U8256 Birchfield Park	Surface Dressing	Greater Heanor	£1,914
			Heanor	U8259 Old Coppice Side (Roper Ave to Roper Ave (incl, service road no. 106 to 108))	Surface Dressing	Greater Heanor	£28,453
			Heanor	U8260 Thorpe Hill Drive	Surface Dressing	Greater Heanor	£16,404
			Osleston & Thurvaston, Trusley	U5050 Unnamed Road From Butterpot Lane Through to Goldhurst Farm	Surface Dressing	Hilton	£54,467
			Dalbury Lees	U5051 Church Road Off Heage Lane And Radbourne (C45 Dalbury to start of track (nr Manor Fm))	Surface Dressing	Hilton	£24,587
			Dalbury Lees	U5052 Unnamed road from Long Lane to Dalbury Hollow (Long Lane to C45 Dalbury)	Surface Dressing	Hilton	£95,345
			Sawley	U6253 Lakeside Avenue	Surface Dressing	Sawley	£9,084

Scheme Number	Parish	Location (list of streets or names of assets affected. Wider area schemes use a broad location)	Intervention description (linked to project/ programme objectives)	Electoral Division	2021-22 Whole Scheme Cost (Design & Construction)
	Sawley	U6254 Lakeside Crescent	Surface Dressing	Sawley	£3,716
	Sawley	U6255 Austen Avenue	Surface Dressing	Sawley	£10,135
	Sawley	U6256 Kennedy Avenue	Surface Dressing	Sawley	£6,982
	Ripley	U8864 Highfield Way (Kirk Close to Maple Ave incl service rd 73 - 85)	Surface Dressing	Ripley West & Heage	£19,107
	Ripley	U8868 Kirk Close (Pear Tree Ave to limit of adoption at school entrance)	Surface Dressing	Ripley West & Heage	£6,682
	Ripley	U8870 High Meadow Close (school)	Surface Dressing	Ripley West & Heage	£1,914
	Ripley	U8869 Hazeltree Close (school)	Surface Dressing	Ripley West & Heage	£1,652
	Ripley	U8872 Willow Avenue	Surface Dressing	Ripley West & Heage	£5,931
	Ripley	U8873 Oak Avenue	Surface Dressing	Ripley West & Heage	£7,695
	Ripley	U8871 Ash Crescent	Surface Dressing	Ripley West & Heage	£12,425
	Ripley	U8862 Hawthorn Avenue	Surface Dressing	Ripley West & Heage	£11,899
	Ripley	U8881 Poplar Avenue	Surface Dressing	Ripley West & Heage	£3,266
	Ripley	U8882 Briars Way	Surface Dressing	Ripley West & Heage	£4,992
	Ripley	U8879 Rowan Avenue	Surface Dressing	Ripley West & Heage	£7,357
	Ripley	U8878 Chestnut Avenue	Surface Dressing	Ripley West & Heage	£8,071
	Ripley	U8890 Slack Lane	Surface Dressing	Ripley West & Heage	£10,248
	Ripley	U8899 Lime Avenue	Surface Dressing	Ripley West & Heage	£5,105
	Ripley	U8911 Jubilee Avenue	Surface Dressing	Ripley West & Heage	£6,119
	Ripley	U8912 Glebe Avenue	Surface Dressing	Ripley West & Heage	£4,317
	Ripley	U8913 Harris Close/Avenue	Surface Dressing	Ripley West & Heage	£9,384

Scheme Number	Parish	Location (list of streets or names of assets affected. Wider area schemes use a broad location)	Intervention description (linked to project/ programme objectives)	Electoral Division	2021-22 Whole Scheme Cost (Design & Construction)
	Ripley	U8844 Padley Close	Surface Dressing	Ripley West & Heage	£2,065
	Ripley	U8856 Ledo Avenue	Surface Dressing	Ripley West & Heage	£4,655
	Ripley	U8857 Jura Avenue	Surface Dressing	Ripley West & Heage	£6,832
	Cotmanhay	U7032 Beresford Drive	Surface Dressing	Ilkeston East	£10,661
	Cotmanhay	U7033 Birchover Place	Surface Dressing	Ilkeston East	£1,577
	Cotmanhay	U7031 Devonshire Close	Surface Dressing	Ilkeston East	£1,727
	Cotmanhay	U7037 Monsall Avenue	Surface Dressing	Ilkeston East	£4,429
	Cotmanhay	U7036 Donner Crescent	Surface Dressing	Ilkeston East	£9,835
	Cotmanhay	U7035 Dovedale Circle	Surface Dressing	Ilkeston East	£20,758
	Cotmanhay	U7034 Castleton Avenue	Surface Dressing	Ilkeston East	£3,416
	Cotmanhay	U7038 Lathkill Avenue	Surface Dressing	Ilkeston East	£5,518
	Cotmanhay	U7039 Ilam Square	Surface Dressing	Ilkeston East	£2,102
	Cotmanhay	U7040 Darley Square	Surface Dressing	Ilkeston East	£1,877
	Cotmanhay	U7043 Edale Square	Surface Dressing	Ilkeston East	£2,365
	Cotmanhay	U7055 Dronfield Place	Surface Dressing	Ilkeston East	£2,177
	Cotmanhay	U7046 Hartington Place	Surface Dressing	Ilkeston East	£2,140
	Cotmanhay	U7054 Langley Avenue	Surface Dressing	Ilkeston East	£5,293
	Cotmanhay	U7053 Coppice Avenue	Surface Dressing	Ilkeston East	£13,476
	Cotmanhay	U7056 Church Drive (Coppice Ave to end (at posts))	Surface Dressing	Ilkeston East	£7,658
	Cotmanhay	U7041 Bailey Brook Road (Skeavington's Ln to Turnoak Avenue)	Surface Dressing	Ilkeston East	£8,821
	Cotmanhay	U7363 Turnoak Avenue	Surface Dressing	Ilkeston East	£3,566

Scheme Number	Parish	Location (list of streets or names of assets affected. Wider area schemes use a broad location)	Intervention description (linked to project/ programme objectives)	Electoral Division	2021-22 Whole Scheme Cost (Design & Construction)
	Cotmanhay	U7041 Holmewood Avenue	Surface Dressing	Ilkeston East	£2,027
	Cotmanhay	U7041 Blackwell Avenue	Surface Dressing	Ilkeston East	£3,604
	Cotmanhay	U7364 Inkerman Close	Surface Dressing	Ilkeston East	£2,140
	Cotmanhay	U7041 Longcroft Avenue	Surface Dressing	Ilkeston East	£2,140
	Cotmanhay	U9945 Langwith Close	Surface Dressing	Ilkeston East	£1,239
	Sturston	Road to Sturston Hall Farm (A517 to Mill Ln)	Surface Dressing	Ashbourne/ Dovedale	£16,632
	Ashbourne	U0721 King Edward Street	Carriageway Resurfacing	Ashbourne	£70,256
	Matlock Bath	U0376 Upperwood Road	Carriageway Resurfacing	Wirksworth	£40,425
	Staveley	C40 Inkersall Road (Barlow Rd to Stevenson Road)	Carriageway Resurfacing	Staveley/ Staveley North & Whittington	£43,368
	Clay Cross	Eyre Street (A61 to Bridge St)	Carriageway Resurfacing	Clay Cross North	£28,600
	Old Whittington	U2101 Newbridge Lane (From Whitting Valley Rd south east)	Carriageway Resurfacing	Staveley North & Whittington	£105,074
	Eckington	U15059 Gosber Street	Carriageway Resurfacing	Eckington & Killamarsh	£70,345
	Stanley	U7212 Dale Road (White Gables to limit of adoption)	Carriageway Resurfacing	Breadsall & West Hallam	£24,038
	Higham	C58 Strettea Lane (B6013 to no.63)	Carriageway Resurfacing	Wingerworth & Shirland	£28,912
	Old Whittington	B6057/B6052 Station Road (Whittington Moor Roundabout to Whitting Valley Rd)	Carriageway Resurfacing	Staveley North & Whittington	£124,489
	Upper Lumsdale	U0091 Lumsdale Road (Smuse Ln to Highfields Sch)	Carriageway Resurfacing	Matlock	£273,493
	Great Hucklow	U1088 Dirty Lane	Carriageway Resurfacing	Bakewell	£111,166
	Youlgrave	C288 Alport Lane (New Road to Raenstor Lodge)	Carriageway Resurfacing	Dovedale	£99,478
	Eckington	U15083 Peveril Road	Carriageway Resurfacing	Eckington & Killamarsh	£61,818

Scheme Number			Parish	Location (list of streets or names of assets affected. Wider area schemes use a broad location)	Intervention description (linked to project/ programme objectives)	Electoral Division	2021-22 Whole Scheme Cost (Design & Construction)
			Barrow Hill	U2216 Station Road (Works Rd to Campbell Dr)	Carriageway Resurfacing	Staveley North & Whittington	£140,761
			Shirebrook	U12425 Merchant Street	Carriageway Resurfacing	Shirebrook & Pleasley	£28,945
			Ilkeston	C338 Church St/Cotmanhay Rd rbt	Carriageway Resurfacing	Ilkeston East	£27,761
			Furness Vale	U10581 Diglee Road (no.17 to limit of adoption)	Carriageway Resurfacing	Whaley Bridge	£27,117
			Tintwistle	U11125 Bank Lane (A628 to 168m southwest)	Carriageway Resurfacing	Etherow	£41,633
			Buxton	U10243 Hollins Avenue (conc road)	Carriageway Resurfacing	Buxton West	£14,679
			Shirebrook	B6407 Main Street (Common Ln to Common Ln juncts)	Carriageway Resurfacing	Shirebrook & Pleasley	£8,591
			Temple Normanton	B6039 Mansfield Road (Chesterfield Rd to Church Ln)	Carriageway Resurfacing	Sutton	£160,255
			Tintwistle	U11126 Chapel Brow (A628 to Old Rd) part cobbled	Carriageway Resurfacing	Etherow	£28,747
			Ilkeston	U6926 Digby Street (Station St to limit of adoption)	Carriageway Resurfacing	Ilkeston East	£52,289
			Alfreton	B600 Nottingham Road (Well Somercotes to B6016)	Carriageway Resurfacing	Alfreton and Somercotes	£28,422
Non-Resilient Network Carriageways							£5,192,144
Carriageways Total							£12,839,815

Scheme Number	Parish	Location (list of streets or names of assets affected. Wider area schemes use a broad location)	Intervention description (linked to project/ programme objectives)	Electoral Division	2021-22 Whole Scheme Cost (Design & Construction)
	Various	Various Countywide	Footway Patching	Various	£500,000
	Various	Various roadside reserves countywide	Environmental and bio-diversity improvements including contributions to partner agencies such as Derbyshire Wildlife Trust	Various	£25,000
	Sickleholme	A6187 Sickleholme (Crossroads to Garden Centre)	Footway Resurfacing	Bakewell	£31,500
	Buxton	Cavendish Avenue	Footway Resurfacing	Buxton West	£42,000
	Hope	A6187 Castleton Road/Market Place (Village centre to Railway Bridge)	Footway Resurfacing	Chapel & Hope Valley	£31,500
	Buxton	Darwin Avenue	Footway Resurfacing	Buxton West	£15,750
	Starkholmes	Starkholmes Road (Duke William to Riber Road)	Footway Resurfacing	Matlock	£63,000
	Matlock	Hurds Hollow (Dimple Road to Smedley Street)	Footway Resurfacing	Matlock	£36,750
	Darley Dale	B6013 Chesterfield Road (A6 to Park Lane)	Footway Resurfacing	Derwent Valley	£26,250
	Ashbourne	Mayfield Road	Footway Resurfacing	Ashbourne	£26,250
	Litton	Mires Lane (Speed limit to Hall Lane)	Footway Resurfacing	Bakewell	£15,750
	Peak Dale	School Road	Footway Resurfacing	Buxton North & East	£52,500
	New Mills	Mellor Road	Footway Resurfacing	New Mills	£57,750
	Glossop	Primrose Lane	Footway Resurfacing	Glossop & Charlesworth	£52,500
	Hadfield	Green Lane	Footway Resurfacing	Etherow	£73,500
	Long Eaton	Dovedale Avenue (Phase 2)	Footway Resurfacing	Sawley	£84,000
	Long Eaton	Ruskin Avenue (Phase 2)	Footway Resurfacing	Sawley	£84,000
	Shipley	Hassock Lane North / South (Phase 2)	Footway Resurfacing	Greater Heanor	£52,500
	Loscoe	Flamstead Avenue	Footway Resurfacing	Heanor Central	£60,900
	Loscoe	Church View	Footway Resurfacing	Heanor Central	£10,080

Scheme Number	Parish	Location (list of streets or names of assets affected. Wider area schemes use a broad location)	Intervention description (linked to project/ programme objectives)	Electoral Division	2021-22 Whole Scheme Cost (Design & Construction)
	Heanor	Broadway	Footway Resurfacing	Heanor Central	£63,000
	Waingroves	Church Street	Footway Resurfacing	Ripley East and Codnor	£70,875
	Waingroves	Waingroves Road	Footway Resurfacing	Ripley East and Codnor	£99,645
	Walton	Whitecotes Lane (Davian Way to school)	Footway Resurfacing	Boythorpe and Brampton South	£47,250
	Holme Hall	Woodland Walk (evens side)	Footway Resurfacing	Loundsley Green and Newbold	£13,650
	Hollingwood	Pine Street (odd side)	Footway Resurfacing	Brimington	£27,300
	Alfreton	Flowery Leys Lane (Cowhan Close to Birchwood Rd)	Footway Resurfacing	Alfreton and Somercotes	£16,800
	North Wingfield	Dark Lane (south side)	Footway Resurfacing	Sutton	£28,350
	Wingerworth	Halcyon Approach (north side)	Footway Resurfacing	Clay Cross North	£17,850
	Marsh Lane	Main Road (Quarry Hill to School Lane)	Footway Resurfacing	Eckington and Killamarsh	£26,250
	Troway	Quarry Hill	Footway Resurfacing and kerbing	Eckington and Killamarsh	£37,800
	Dronfield	Wingfield Close	Footway Resurfacing	Dronfield West and Walton	£12,600
	Dronfield	Mickley Lane	Footway Resurfacing and kerbing	Dronfield West and Walton	£14,700
	Whitwell	High Street	Footway Resurfacing	Bolsover North	£17,850
	Bakestone Moor	Peter More Hill (Petra Cottage into village)	Footway Resurfacing	Bolsover North	£31,500
	Tibshelf	Peveiril Road	Footway Resurfacing	Tibshelf	£16,800
	Holmewood	Chesterfield Road (Shakespeare St to A6175)	Footway Resurfacing	Sutton	£34,650
	Whitwell	A619 Worksop Road (B6043 to The Half Moon PH)	Footway Resurfacing	Bolsover North	£36,750
	Morton	Stretton Road (Church Lane to number 63)	Footway Resurfacing	Clay Cross South	£42,000

Scheme Number	Parish	Location (list of streets or names of assets affected. Wider area schemes use a broad location)	Intervention description (linked to project/ programme objectives)	Electoral Division	2021-22 Whole Scheme Cost (Design & Construction)
	Chesterfield	Springbank Road	Footway Resurfacing	Boythorpe and Brampton South	£18,900
	Newbold	St Johns Road	Footway Patching	St Marys	£42,000
	Brimington	Devon Drive	Footway Patching	Brimington	£42,000
Footways Total					£2,100,000

Scheme Number	Parish	Location (list of streets or names of assets affected. Wider area schemes use a broad location)	Intervention description (linked to project/ programme objectives)	Electoral Division	2021-22 Whole Scheme Cost (Design & Construction)
	Various	Various locations Countywide	Drainage works and flood prevention	Various	£1,257,785
	Various	Various	Flood Damage Remedials	Various	£1,650,000
	Various	A6 Derwent Valley Challenge Fund Contribution	Drainage Works	Derwent Valley/ Matlock/ Wirksworth/ Alport & Derwent	£344,000
Drainage and flood management Total					£3,251,785

Scheme Number	Parish	Location (list of streets or names of assets affected. Wider area schemes use a broad location)	Intervention description (linked to project/ programme objectives)	Electoral Division	2021-22 Whole Scheme Cost (Design & Construction)
	Countywide	Countywide	Scheduled Ancient Monument Bridges Major Maintenance	Various	£250,000
	Countywide	Countywide	Countywide Minor Culvert Data Capture and Repairs	Various	£150,000
	Countywide	Countywide	Landslip / Rock Fall Investigation & Remedial Works	Various	£150,000

Scheme Number	Parish	Location (list of streets or names of assets affected. Wider area schemes use a broad location)	Intervention description (linked to project/ programme objectives)	Electoral Division	2021-22 Whole Scheme Cost (Design & Construction)
	Countywide	Countywide	Retaining Wall Asset Management Data Collection	Various	£52,000
	Countywide	Countywide	Structures Assessments & Post Tensioned Special Inspections	Various	£150,000
	Calver	S27089 North Cliff Landslip (B6001)	Geophysics investigation and c/w patching	Derwent Valley	£25,000
	Whaley Bridge	S07009 Shallcross Woods Landslip (A5004)	Remedial scheme	Whaley Bridge	£1,000,000
	Bakewell	S26188 Station Road Landslip	Design and temporary measures	Bakewell	£60,000
	Alport	S26086 Bowers Hall Landslip (B5056)	Installation of drainage system	Bakewell	£50,000
	Chatsworth	S26087 Bridgehouse Landslip (B6012)	Geophysics investigation and c/w patching	Derwent Valley	£25,000
Scheme Number	Parish	Location (list of streets or names of assets affected. Wider area schemes use a broad location)	Intervention description (linked to project/ programme objectives)	Electoral Division	2021-22 Whole Scheme Cost (Design & Construction)
	Various	A57 Landslips	Site investigations to developing sites, remote monitoring, temporary measures	Glossop & Charlesworth/ Chapel & Hope Valley	£50,000
	Millers Dale	C17004 Upper Monksdale Culvert (B6049)	Hydrological modelling, investigation works and design	Dovedale	£40,000
	Chesterfield	D37877 Off Crow Lane	Redecking of substandard bridge. Design & Site Investigation	Spire	£75,000
	Clowne	D47067 Slayley Hill	Strengthening of substandard structure. Design & Investigation	Barlborough & Clowne	£25,000
	Shirebrook	H56023 Carter Lane (B6031)	Strengthening joint scheme with NCC and HEHRE	Shirebrook & Pleasley	£80,000

Scheme Number			Parish	Location (list of streets or names of assets affected. Wider area schemes use a broad location)	Intervention description (linked to project/ programme objectives)	Electoral Division	2021-22 Whole Scheme Cost (Design & Construction)
			Woodville	P31008 Woodville Culvert (A514)	Major maintenance / CIPP lining	Melbourne/ Swadlincote Central	£75,000
			Baslow	RB270139 The Wheatsheaf Hotel Retaining Wall (A619)	Retaining wall rebuild	Derwent Valley	£100,000
			Rushup Edge	Rushup Edge Retaining Walls (C374)	Retaining wall rebuild	Chapel & Hope Valley	£50,000
Bridges, structures, retaining walls and highway boundary structures Total							£2,407,000
Scheme Number			Parish	Location (list of streets or names of assets affected. Wider area schemes use a broad location)	Intervention description (linked to project/ programme objectives)	Electoral Division	2021-22 Whole Scheme Cost (Design & Construction)
			Ilkeston	A6007/ Shipley Common Lane junct	Replacement of old signal equipment including LED and other technology to reduce delays, improve efficiency and reduce ongoing maintenance and energy costs	Ilkeston East/ Ilkeston West	£96,000
			Chatsworth	B6012 Beeley Bridge	Replacement of old signal equipment including LED and other technology to reduce delays, improve efficiency and reduce ongoing maintenance and energy costs	Derwent Valley	£60,000
			Chesterfield	Crow Lane	Replacement of old signal equipment including LED and other technology to reduce delays, improve efficiency and reduce ongoing maintenance and energy costs	Brimington/ Spire	£84,000

Scheme Number			Parish	Location (list of streets or names of assets affected. Wider area schemes use a broad location)	Intervention description (linked to project/ programme objectives)	Electoral Division	2021-22 Whole Scheme Cost (Design & Construction)
			Renishaw	A6135 Main Road	Replacement of old signal equipment including LED and other technology to reduce delays, improve efficiency and reduce ongoing maintenance and energy costs	Eckington & Killamarsh	£40,250
			Various	Countywide	Countywide road markings	Various	£517,000
			Various	A617 Hasland By-pass	Replacement of road stud inserts	Spire/ Birdholme/ Sutton	£44,000
			Monyash/ Alfreton	A515 Monyash & A61 Alfreton	Renewal of winter maintenance weather stations	Dovedale/ Wingerworth & Shirland	£36,750
			Various	Various high routes	Erection of snow gates	Various	£10,500
Scheme Number			Parish	Location (list of streets or names of assets affected. Wider area schemes use a broad location)	Intervention description (linked to project/ programme objectives)	Electoral Division	2021-22 Whole Scheme Cost (Design & Construction)
			Various	Countywide	Replacement of miscellaneous transport assets (including cattle grids)	Various	£392,750
Traffic Signs, Lines and Signals Total							£1,281,250

--

Scheme Number			Parish	Location (list of streets or names of assets affected. Wider area schemes use a broad location)	Intervention description (linked to project/ programme objectives)	Electoral Division	2021-22 Whole Scheme Cost (Design & Construction)
			Various	A6005 Borrowwash to Draycott	Installation of passive safe lighting columns, LED lighting and replacement of cable network	Various	£244,000
			Oakerthorpe	A615/B6013 Belper Road, Oakerthorpe	A615/B6013 Installation of passive safe lighting columns, LED lighting and cable network replacement	Wingerworth and Shirland/Ripley West and Heage	£67,100
			Denby	B6179 Derby Road, Denby	Installation of passive safe lighting columns, LED lighting and cable network replacement	Horsley	£91,500
			Various	B6019 Alfreton to Pinxton	Installation of passive and standard lighting columns, LED lighting and cable network replacement	Various	£305,000
			Baslow	A619/A623/A621/B6012 Baslow	Installation of passive safe lighting columns, LED lighting and cable network replacement	Derwent Valley	£146,400
			Various	Street Lighting Network	Countywide defective column replacements	Various	£228,750

Scheme Number			Parish	Location (list of streets or names of assets affected. Wider area schemes use a broad location)	Intervention description (linked to project/ programme objectives)	Electoral Division	2021-22 Whole Scheme Cost (Design & Construction)
			Countywide	Countywide	Project management of local transport capital projects and preparation of future local transport capital programmes (early starts)	Countywide	£12,200
Street Lighting Total							£1,094,950

Scheme Number			Parish	Location (list of streets or names of assets affected. Wider area schemes use a broad location)	Intervention description (linked to project/ programme objectives)	Electoral Division	2021-22 Whole Scheme Cost (Design & Construction)
			Countywide	Countywide	Advanced Design to enable Major route improvements in future programmes	Various	£75,000
			Countywide	Countywide	General rights of way improvements	Various	£575,000
			Countywide	Countywide	Project management of local transport capital projects and preparation of future local transport capital programmes (early starts)	Various	£100,000
Rights of Way Total							£750,000

Scheme Number			Parish	Location (list of streets or names of assets affected. Wider area schemes use a broad location)	Intervention description (linked to project/ programme objectives)	Electoral Division	2021-22 Whole Scheme Cost (Design & Construction)
			White Peak Loop (Rowsley)	Harrison Way to Old Station Close	Refurbish boardwalk	Derwent Valley	£131,250
			Peak Forest Tramway (Chinley)	700m section between Harpur Cottage and Lower Crist	Resurfacing and drainage improvements	Whaley Bridge	£52,500
Cycle Routes Total							£183,750

Scheme Number			Parish	Location (list of streets or names of assets affected. Wider area schemes use a broad location)	Intervention description (linked to project/ programme objectives)	Electoral Division	2021-22 Whole Scheme Cost (Design & Construction)
			Elvaston	Elvaston Castle Multi-user Trail	Re-surface trail following repeated flood damage	Aston	£105,000.00
			Elvaston	Elvaston Castle Riverside Link Path	Re-surface trail following repeated flood damage	Aston	£52,500.00
Other Greenway Maintenance Total							£157,500

02 2021-22 Capital Integrated Transport Programme

Scheme Number	Parish	Location (list of streets or names of assets affected. Wider area schemes use a broad location)	Intervention description (linked to project/ programme objectives)	Electoral Division	2021-22 Whole Scheme Cost (Design & Construction)
	Various	Various streets - Countywide	Small-scale signing and lining schemes to improve management of traffic to reduce delays to road users and reduce conflicting demands for parking in town and village centres in accordance with national legislation.	Various	£270,000
Traffic Management Total					£270,000

Scheme Number	Parish	Location (list of streets or names of assets affected. Wider area schemes use a broad location)	Intervention description (linked to project/ programme objectives)	Electoral Division	2021-22 Whole Scheme Cost (Design & Construction)
	Glossop	Key Cycle Network (KCN) link between Glossop Road and Gamesley Sidings	Delivery of Key Cycle Network (KCN) link	Glossop & Charlesworth/ Etherow	£52,500
	Countywide	Various locations	Section 106 Top up fund	Various	£105,000
	White Peak Loop	Various locations	Route Construction	Various	£105,000
	Markham Vale/ Poolsbrook	Bolsover Loop to Trans Pennine Trail	Design of KCN between Markham Vale and Poolsbrook Country Park	Various	£30,000
	Longcliffe	High Peak Trail - Hoe Grange (Ph 3)	Retaining Wall Repairs	Wirksworth	£35,000
	Ryder Point	High Peak Trail - Ryder Point	Retaining Wall Repairs	Wirksworth	£100,000
	Shirebrook	Archaeological Way and other routes through Shirebrook	Route improvements	Shirebrook & Pleasley	£120,000
Key Cycle Network Investment Total					£547,500

Scheme Number			Parish	Location (list of streets or names of assets affected. Wider area schemes use a broad location)	Intervention description (linked to project/ programme objectives)	Electoral Division	2020-21 Whole Scheme Cost (Design & Construction)
			Countywide	Various Streets	Provision of dropped crossings to enhance accessibility to and connectivity in town and village centres.	Various	£80,500
			Countywide	Various locations	Groundwork Service Level Agreement	Various	£21,000
Local Cycling and Walking Investment Total							£101,500

Scheme Number			Parish	Location (list of streets or names of assets affected. Wider area schemes use a broad location)	Intervention description (linked to project/ programme objectives)	Electoral Division	2021-22 Whole Scheme Cost (Design & Construction)
			Various	Various Locations: Hope Valley, Chesterfield town centre, Dronfield, A61 corridor between Chesterfield & Ripley, South Derbyshire, Belper and Matlock rail stations.	Expansion of Real Time Information System	Various	399,000
			Various	Various - "Wheels to Work"	Purchase of scooters & e-bikes	Various	52,500
			Various	Various bus stops countywide	New & Replacement Bus Shelters	Various	136,500
			Various	Various bus stops countywide	Bus stop accessibility upgrades & new provision	Various	94,500
			Various	Various bus stops countywide	Bus stop & station signage	Various	15,750
			Various	Various bus stops countywide	Bus stop infrastructure replacement	Various	10,500
			Various	Various bus stops countywide	Provision of bus shelter lighting	Various	24,150

Scheme Number	Parish	Location (list of streets or names of assets affected. Wider area schemes use a broad location)	Intervention description (linked to project/ programme objectives)	Electoral Division	2021-22 Whole Scheme Cost (Design & Construction)
	Matlock	Matlock Market Hall "bus station"	Contribution to DDDC improvement scheme	Matlock	55,650
	Matlock	A6 Bakewell Road bus stop	Bus stop accessibility and infrastructure improvements	Matlock	45,150
	Hope Valley	Hope Valley Service 271/272 corridor - Phase 2	Accessibility and infrastructure improvements	Various	51,450
	Brough	A6187/B6049 Brough Lane End junction	Relocation of bus stops	Chapel & Hope Valley	21,000
	Bolsover	Bolsover Market Place	Bus stop (west bound) improvements	Bolsover North/ Bolsover South	47,250
	Various	Glossop area Service 237 Corridor - Phase 2	Accessibility and infrastructure improvements	Various	43,050
	Glossop	Henry Street	Bus shelter replacement & provision of real time information	Glossop & Charlesworth	28,350
	Various	Alfreton to Ripley - "The Comet" corridor	Bus stop accessibility and infrastructure improvements	Various	130,200
	Long Duckmanton	A632 Chesterfield Road/ Rectory Road junction	Interactive signage improvements to improve junction safety for buses.	Sutton	15,750
	Countywide	Various	Purchase and installation of electric vehicle charging points	Various	105,000
	Ilkeston	Ilkeston Station	Provision of secure, covered cycle parking	Ilkeston East	26,250
	Countywide	Various Locations	Refurbishment & Modernisation of cycling monitoring equipment on KCN	Various	15,750
Public Transport Total					1,317,750

Scheme Number			Parish	Location (list of streets or names of assets affected. Wider area schemes use a broad location)	Intervention description (linked to project/ programme objectives)	Electoral Division	2021-22 Whole Scheme Cost (Design & Construction)
			Darley Dale	A6 Dale Road / Station Road	Traffic Signals with removal of existing pedestrian crossing	Darley Dale	£168,000
			Alfreton	B6019 Mansfield Road / Salcombe Road	Replacement of mini roundabout with Traffic Signals	Alfreton	£240,000
			Ripley	B6179 Lower Kilburn (Near Petrol Station)	Speed Limit reduction and Interactive Signs	Ripley	£11,500
			Chellaston	A514 Swarkestone Road (northbound approach to A50 roundabout)	High Friction Surfacing	Aston	£20,300
			Cromford	A6 Dale Road (near junction with Artist corner car park)	Interactive sign indicating speed limit and slow down message	Wirksworth	£11,500
			Stretton	A61 Main Road / B6014 Morton Road	Central Refuge Island to incorporate give way sign.	Wingerworth & Shirland	£18,750
			Alfreton	B600 Nottingham Road (Cotes Park area)	Reduced Speed Limit, Refuge Islands and Interactive Signs	Alfreton & Somercotes	£100,000
			Ripley	B6179 Derby Road / Elms Aveune	Removal of right turn habourage	Ripley West & Heage/ Ripley East & Codnor	£9,200
			Ripley	A610 Ripley Road / B6013 Chesterfield Road	Interactive sign indicating turning traffic	Ripley West & Heage	£9,200
			Kirk Hallam	A6096 Ladywood Road / Godfrey Drive	Re-locate safety camera	Ilkeston West	£17,250

Scheme Number	Parish	Location (list of streets or names of assets affected. Wider area schemes use a broad location)	Intervention description (linked to project/ programme objectives)	Electoral Division	2021-22 Whole Scheme Cost (Design & Construction)
	Clay Cross	A61 / Eyre Street	Junction narrowing	Clay Cross North	£12,500
	Countywide	Various Locations	Project management of local transport capital projects and preparation of future local transport capital programmes (early starts)	Various	£200,000
Road Safety Total					£818,200

Scheme Number	Parish	Location (list of streets or names of assets affected. Wider area schemes use a broad location)	Intervention description (linked to project/ programme objectives)	Electoral Division	2021-22 Whole Scheme Cost (Design & Construction)
	Woodville	Woodville-Swadlincote Regeneration Route	Funding Contribution	Swadlincote South/ Swadlincote Central	£250,000
Preparation and Implementation of Major Highway Projects Total					£250,000

Scheme Number	Parish	Location (list of streets or names of assets affected. Wider area schemes use a broad location)	Intervention description (linked to project/ programme objectives)	Electoral Division	2021-22 Whole Scheme Cost (Design & Construction)
		None			
Countryside Assets Total					£0